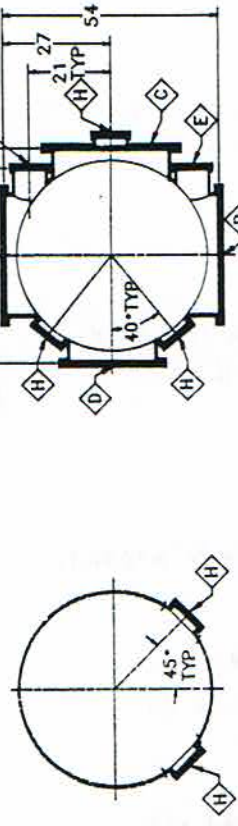


NOTES:
 1. FLANGE SCHEDULE PER TABLE BELOW:

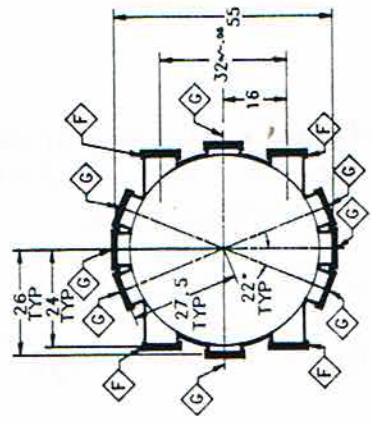
ITEM	SIZE	QTY.	TYPE SEAL	COVER	CENTERING PINS
A	48" ID TUBE	2	DUAL *O* RING	N/A	2
B	30" OD TUBE	2	DUAL *O* RING	BLIND FLANGE*	2
C	30" OD TUBE	1	DUAL *O* RING	BLIND FLANGE* WITH OPENING	2
D	24" OD TUBE	1	DUAL *O* RING	TEMPORARY	0
E	8" OD TUBE	6	CONFLAT	TEMPORARY	0
F	8" OD TUBE	8	CONFLAT	BLIND FLANGE	0
G	8" OD TUBE	5	CONFLAT	TEMPORARY	0
H	1.5" OD TUBE	1	CONFLAT	BLIND FLANGE	0

* WITH HANDLES AND LIFTING LUG

- TEMPORARY COVERS ARE FOR SHIPPING/STORAGE PURPOSES ONLY (E.G., 1/4" ALUMINUM)
- DUAL *O* RING SEALS INCLUDE PUMPED ANNULUS BETWEEN SEALS. ALL ANNULUSES ON CHAMBER TO BE CONNECTED TO A SINGLE FLANGE \diamond 1.
- ALL LINEAR DIMENSIONS ARE IN INCHES.
- TOLERANCES, UNLESS OTHERWISE SPECIFIED: LINEAR, ± 0.1 " ANGULAR, ± 1 DEGREE UNLESS OTHERWISE SPECIFIED.
- ALL FLANGES TO BE PERPENDICULAR TO OPENING AXIS WITHIN 0.1".
- MARK PARTS PER SPECIFICATION: CHAMBER I.D. IS TMCX, WHERE X REPRESENTS A SERIALIZED CHAMBER NUMBER: 1,2,3...ETC.
- THE NECKS ATTACHING FLANGES \diamond TO THE CHAMBER BODY SHOULD BE MADE AS SHORT AS PRACTICAL.
- (REFERENCE ONLY) LASER BEAM HEIGHT ABOVE SUPPORTING SURFACE IS 36".
- OPENINGS TO BE IN TWO SETS OF TWO EACH, COAXIAL WITHIN 0.05", WITH AXES $7^\circ \pm 0.05^\circ$ ABOVE SUPPORTING SURFACE AND WITH FLANGES PERPENDICULAR TO AXES WITHIN 0.03"
- ASSEMBLY SHALL COMPLY WITH SPECIFICATION NO. 1202010, REVISION A.

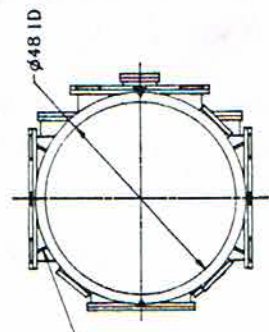


SECTION A-A THROUGH UPPER FLANGES



SECTION C-C THROUGH LOWER FLANGES

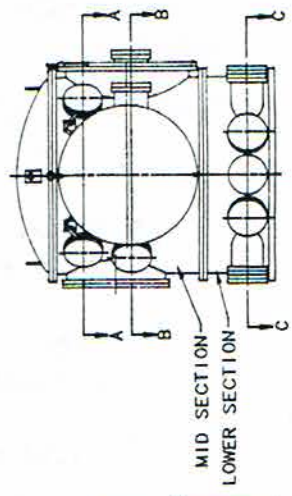
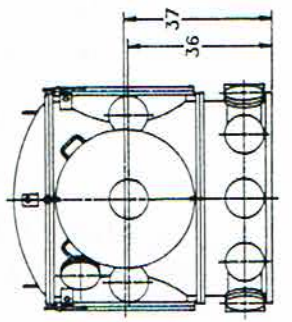
SECTION B-B THROUGH INTERMEDIATE FLANGES



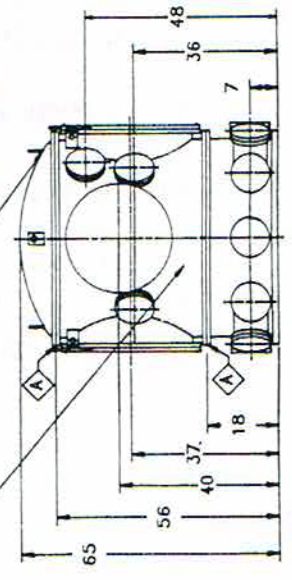
4 LIFTING LUGS ON MID SECTION

(SHOWN WITH TOP HEAD REMOVED)

FLANGE \diamond OF MANIFOLD FOR PUMPING ANNULUSES TO BE LOCATED IN AREA BELOW FLANGE \diamond (SEE NOTE 3).



MID SECTION LOWER SECTION



ASME FLANGED & DISHED TOP HEAD WITH 4 LIFTING LUGS