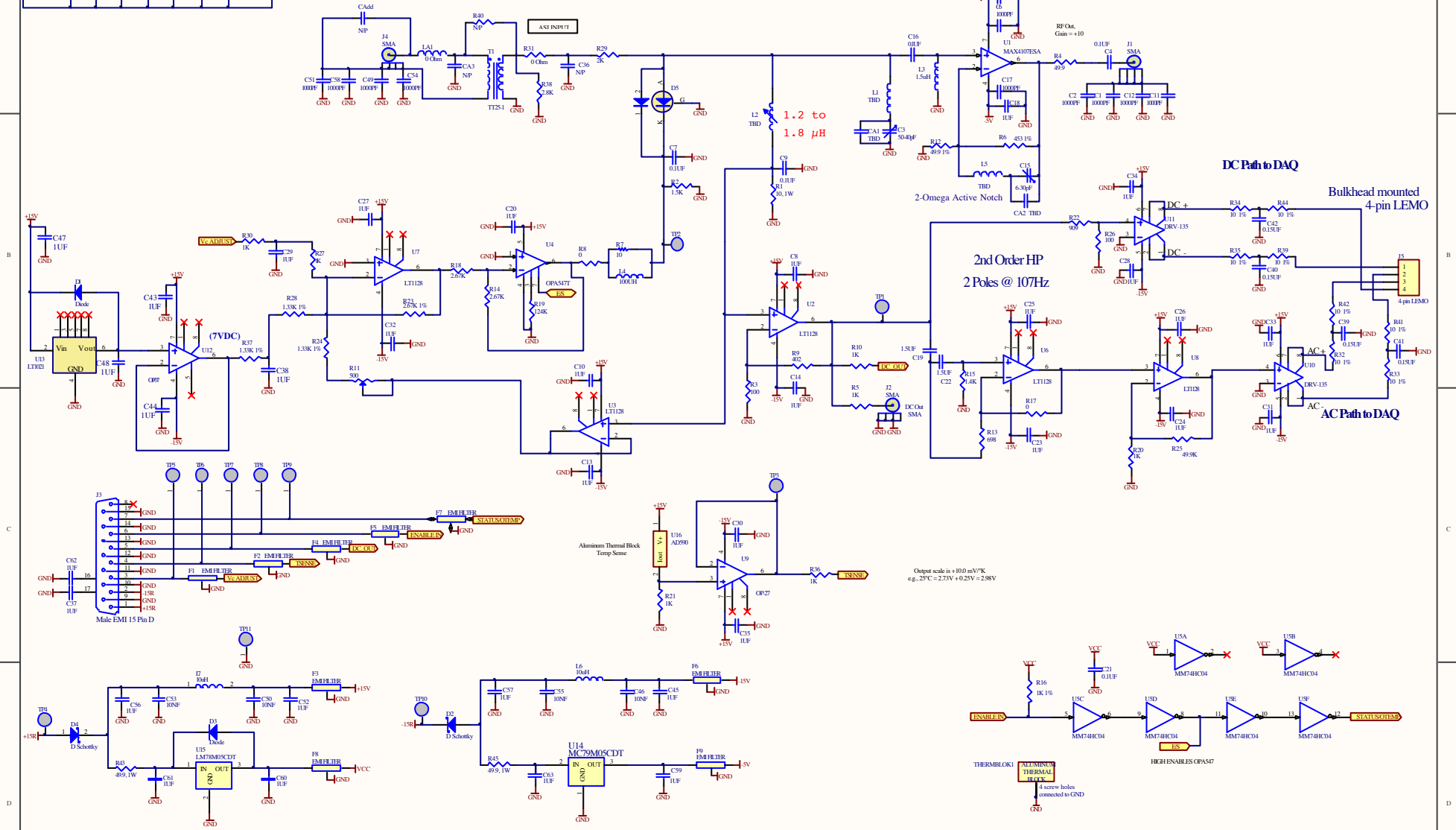
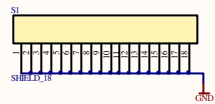
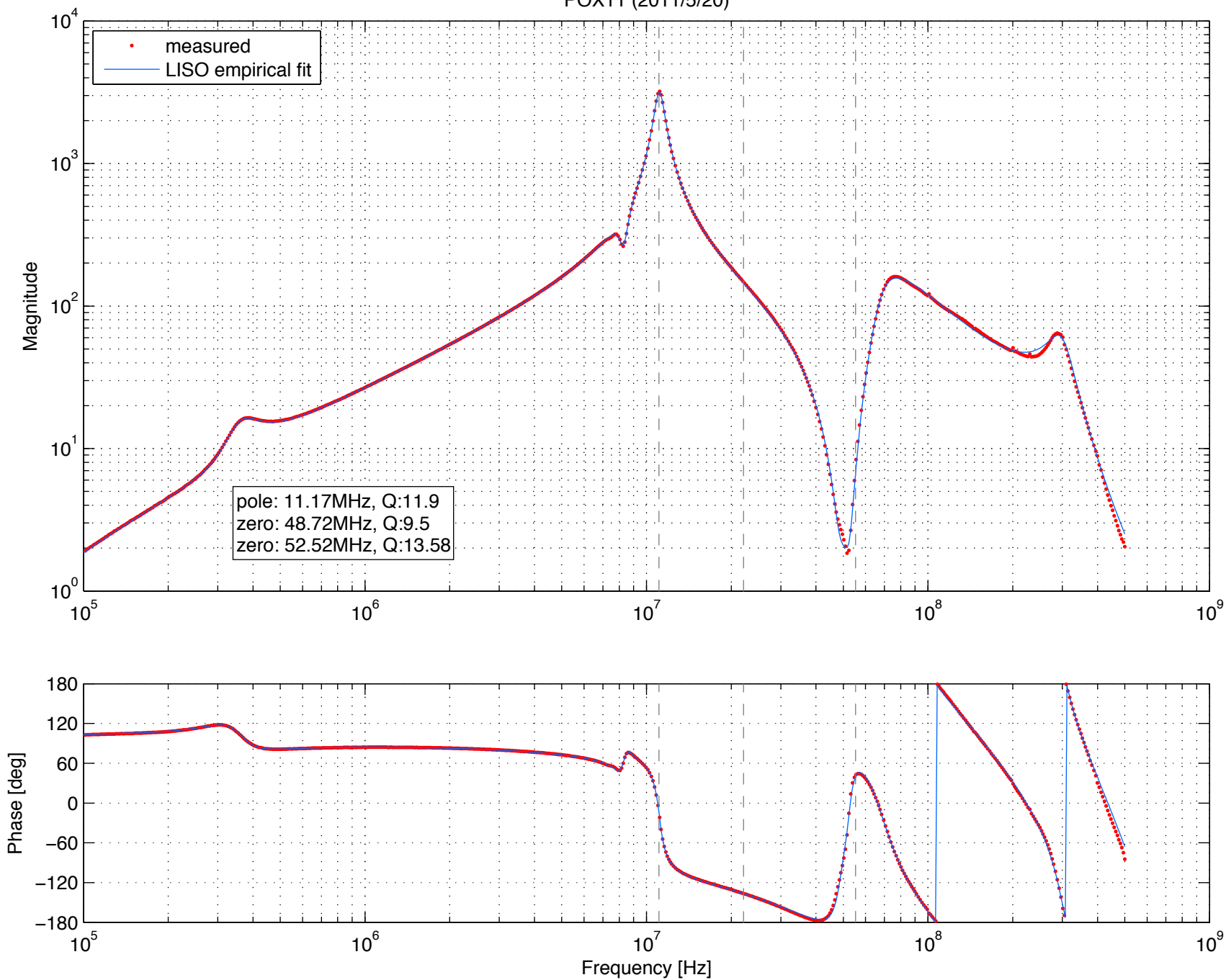


Frequency Component	24.5	29.5	33.3	61.2	68.9	48.9	99.0
CA1	88pF	68pF	47pF				
CA2							
L1	82nH	82nH	68nH				
L2	180nH	150nH	150nH	68nH	68nH	270nH	180nH
L5	1.5nH	1.0nH	1.0nH	3.9nH	3.9nH		
TD	2mm	2mm	2mm	2mm	2mm	1mm	1mm

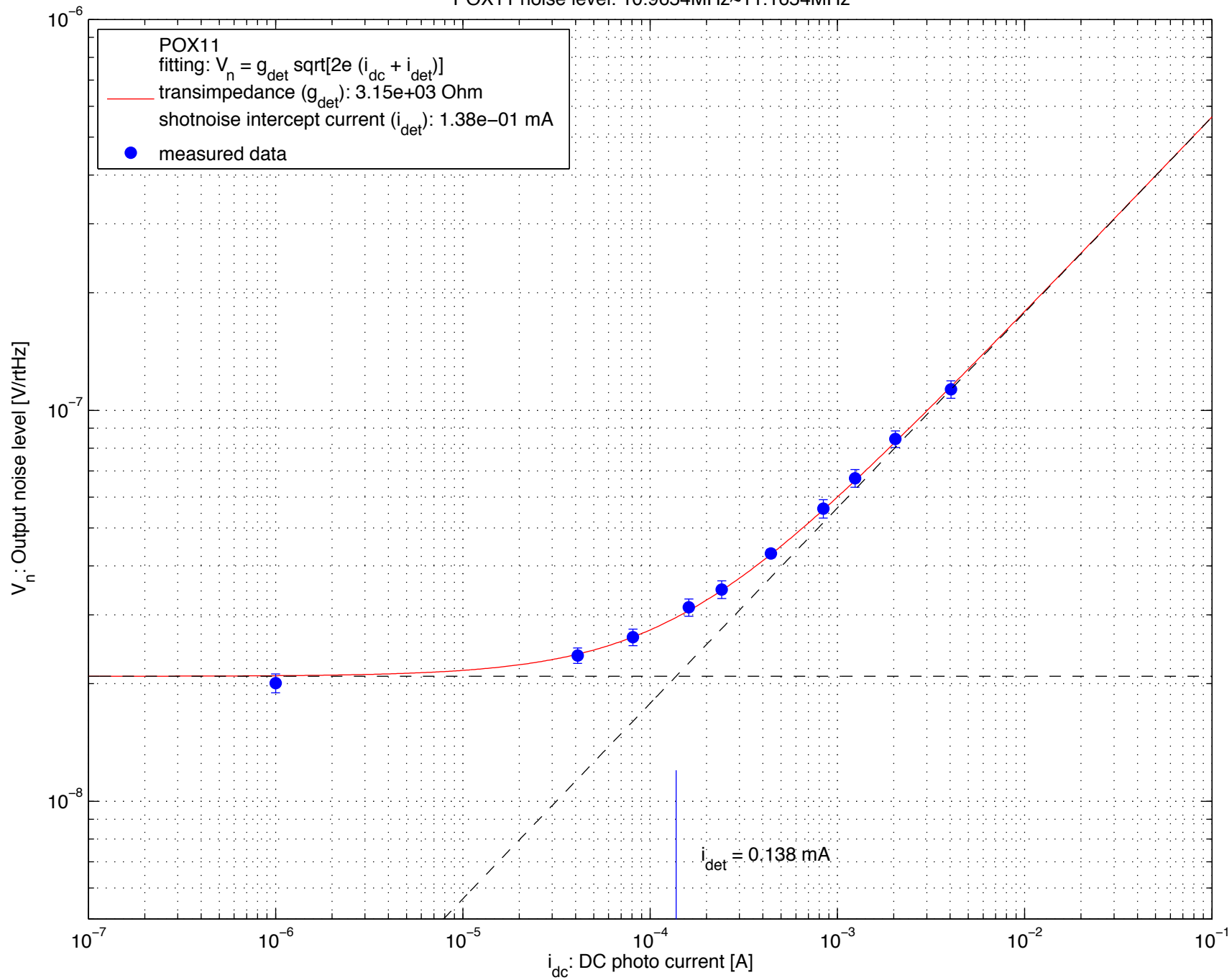
AS11 (ref elog #4576)
It is now called as POX11



POX11 (2011/5/20)



POX11 noise level: 10.9654MHz~11.1654MHz



PD current noise level

