



TC200, TC200-EC Temperature Controller

User Guide



Table of Contents

Chapter 1	Warning Symbol Definitions.....	4
Chapter 2	Description	5
Chapter 3	Safety	6
Chapter 4	Features	7
	4.1. <i>Front and Rear Panel</i>	7
	4.2. <i>Operation</i>	8
Chapter 5	Stand-Alone Operation.....	10
	5.1. <i>Initial Setup</i>	10
	5.2. <i>Turning the Controller On</i>	10
	5.3. <i>Enabling the Heater</i>	10
	5.4. <i>Adjusting the Temperature in NORMAL Mode</i>	10
	5.5. <i>Turning the Heater Off</i>	11
	5.6. <i>Navigating the Front Panel</i>	11
	5.6.1. Overview	11
	5.6.2. Selecting and Adjusting the Gains: P, I, D, and Tune.....	12
	5.6.3. Selecting the Temperature Sensor: PTC100 vs. PTC100 vs. TH10K	13
	5.6.4. Selecting and Adjusting the Maximum Temperature and Power: TMAX and PMAX	14
	5.6.5. Selecting the Units Displayed: Celsius vs. Fahrenheit vs. Kelvin	14
	5.6.6. Selecting the Operating Mode: NORMAL vs. CYCLE	15
	5.7. <i>CYCLE Mode</i>	16
	5.8. <i>TUNE Function</i>	17
	5.9. <i>TMAX Function</i>	17
	5.10. <i>Sensor Alarm</i>	18
	5.11. <i>Setting the PID Gains</i>	18
Chapter 6	Operating from a Computer	19
	6.1. <i>Overview</i>	19
	6.2. <i>Installation</i>	19
	6.2.1. USB Driver	19
	6.2.2. Software Installation.....	19
	6.2.3. Software Set-Up.....	25
	6.3. <i>The Command Line Interface</i>	29
	6.3.1. Setup and Connection.....	29
	6.3.2. Terminal Commands and Queries	30
Chapter 7	Output Connector Pin-Outs	34
Chapter 8	Temperature Sensor Specifications.....	35
	8.1. <i>PT100 and PT1000</i>	35
	8.2. <i>TH10K</i>	35
Chapter 9	Troubleshooting	36

Chapter 10 General Maintenance37

10.1. AC Line Voltage..... 37

10.2. Installing Fuses 37

10.3. General Maintenance 37

10.4. Cleaning 37

Chapter 11 Auxiliary Output.....38

11.1. Operating the Gas Cell Heater 38

11.2. Alternate Use of the Auxiliary Output 38

Chapter 12 Specifications39

12.1. Accessories 39

Chapter 13 Warranty40

Chapter 14 Regulatory41

















Chapter 15 Certifications and Compliance.....42

Chapter 16 Thorlabs Worldwide Contacts43

Chapter 1 Warning Symbol Definitions

Note: Throughout this manual, references to temperature are with respect to °C, even though the TC200 can be set to display °C, °F, or K.

Below is a list of warning symbols you may encounter in this manual or on your device.

Symbol	Description
	Direct Current
	Alternating Current
	Both Direct and Alternating Current
	Earth Ground Terminal
	Protective Conductor Terminal
	Frame or chassis Terminal
	Equipotentiality
	On (Supply)
	Off (Supply)
	In Position of a Bi-Stable Push Control
	Out Position of a Bi-Stable Push Control
	Caution, Risk of Electric Shock
	Caution, Hot Surface
	Caution, Risk of Danger
	Warning, Laser Radiation
	Caution, Spinning Blades May Cause Harm

Chapter 2 Description

The TC200 Temperature Controller is a bench top controller intended for use with resistive heating elements rated up to 18 Watts. This general purpose instrument can drive various types of heaters, including foil and resistive coil types. It accepts feedback from either positive or negative temperature coefficient thermistors, has programmable P, I, and D gains, and will display the temperature in °C, °F, or K. In addition, it can be programmed for up to five sequential temperature settings along with associated ramp and hold times for each level. A user-programmable maximum temperature limit provides protection to the device being heated, and a user-programmable power limit protects the heating element from being over driven.

- Capable of stand-alone operation from a simple keypad interface, the TC200 can be interfaced with a PC using a standard USB Type B connector and our TC200 Application Program. Interfacing with a PC can also be achieved by using LabView® or LabWindows® with a simple command-line interface from any terminal window.

Contents of Package

Each TC200 is shipped with the following standard accessories:

- TC200 User Guide
- IEC 320-Compatible 120 VAC Line Cord for North American AC Wall Sockets (with the TC200) or 230 VAC Line Cord for Europe (with the TC200-EC)
- CD-ROM Containing TC200 Application Software, NI Drivers, and USB Driver
- USB Standard B Cable

Chapter 3 Safety



SHOCK WARNING



HIGH VOLTAGE INSIDE

To avoid electrical shock, the power cord protective grounding conductor must be connected to ground. Do not operate without cover installed. Refer servicing to qualified personnel.

Thorlabs provides the proper 120 VAC power input cable with each TC200 for use in the United States and the proper 230 VAC power input cable with each TC200-EC for use in Europe. If using this unit anywhere else, the user will need to supply a properly grounded power cable to power the unit.



ATTENTION



Do not obstruct the air ventilation slots in the housing.

All statements regarding safety of operation and technical data in this instruction manual will only apply when the unit is operated correctly.



WARNING



Before applying power to your TC200 system, make sure that the protective conductor of the 3 conductor mains power cord is correctly connected to the protective earth contact of the socket outlet! Improper grounding can cause electric shock resulting in severe injury or even death.

Make sure that the line voltage rating marked on the rear panel agrees with your local supply and that the appropriate fuses are installed. Changing of the mains fuse can be done by the user (see page 37 for details).



ATTENTION



This unit must not be operated in explosive environments.

With the exception of the mains fuses, there are no user-serviceable parts in this product.

This device can only be returned when packed into the **complete original packaging**, including all foam packing inserts. If necessary, ask for a replacement package.

Mobile telephones, cellular phones or other radio transmitters are not to be used within the range of three meters of this unit since the electromagnetic field intensity may exceed the maximum allowed disturbance values according to EN50082-1.

Chapter 4 Features

4.1. Front and Rear Panel

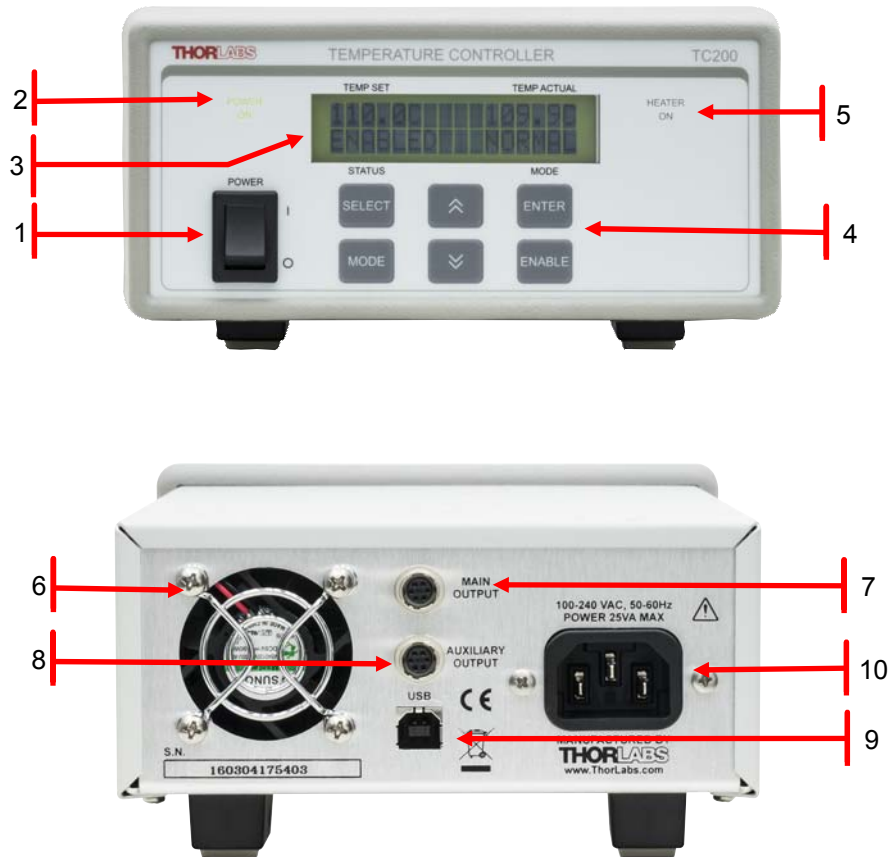


Figure 1 TC200 Front and Rear Panel

1. **Power Switch** – Turns the unit On and Off.
2. **Power On Indicator** – When this text is lit, power is applied to the unit.
3. **LCD Display** – Provides status and temperature information when in the main screen as shown above. Various programmable mode screens are accessible via the **Keypads** (4). See **Navigating the Front Panel** on page 11 for more details.
4. **Keypads** – Used to adjust the temperature set-point (Temp Set), enable and disable the output, and navigate through the various Mode screens.
5. **Heater On Indicator** – When this text is lit, the output relay is energized, and the heater controller is enabled. **Note:** there are situations where the indicator (and relay) will NOT be on, yet the heater controller will still be enabled – See **Maximum Temperature Shutdown** on page 9.

6. **Cooling Fan**
7. **Main Output** – Use this output to connect to the heating system. See page 34 for connector information.
8. **Auxiliary Output** – This output is intended for use only with Thorlabs' GCH Gas Cell Heaters. It provides an unregulated output current proportional to the Main Output current. See page 38 for more information.
9. **USB Connector** – Use this connector for all serial interface connections.
10. **AC Input Connector**

4.2. Operation

1. **Programmable Proportional (P), Integral (I), and Derivative (D) gain settings** – The P, I, and D gains can each be set to values from 0 to 250 (I and D) and 1 to 250 (P gain only). These values indicate representative shares of each gain stage, not absolute gain values (which are fixed internally). Adjust each of the gains accordingly to affect the best response from the particular heating system being controlled. See page 12 for more details.
2. **Automatic Offset Tune** – Often times P, I, or D controllers will not perform as one would hope, leaving either an offset value or constant oscillations about the set-point. The TUNE function allows the user to tune the output of the TC200 exactly to the set-point value without having to adjust the P, I, or D controls. Ideally the I gain and D gain settings should be set to zero and only the P gain should be adjusted to provide a stable temperature. Once the temperature has reached its maximum value (which should be slightly less than the set-point), enabling the TUNE function will digitally calculate the offset and adjust the output to meet the set-point.
3. **Selectable Resistive Sensors** – The TC200 allows the use of three different types of resistive temperature sensors: platinum PT100 and PT1000 resistors with Positive Temperature Coefficients (PTC), and a standard Negative Temperature Coefficient (NTC) TH10K 10 k Ω resistor. When selecting TH10K as the sensor, you can also enter the Beta value for the device to provide more accurate operation. The default Beta value shipped with the unit is 3970. See page 35 for more information on the sensors.
4. **Maximum Temperature Limit** – A value for a maximum temperature limit (**TMAX**) can be programmed into the TC200. **TMAX** can range from 20.0 to 205.0 °C. The set-point value is limited to a maximum of **TMAX** or 200.0 °C, whichever is lower. If **TMAX** is set to a value that is below the current set-point temperature, the set-point will automatically be lowered to the **TMAX** value, along with all stopping temperatures programmed into the cycle parameters that are greater than **TMAX**. Note: The capability to attain Maximum Temperature is load dependent.
5. **Maximum Power Limit** – A value for a maximum output power (**PMAX**) can be programmed into the TC200. Based on a maximum output voltage of 24 VDC, the **PMAX** value will provide the proper current limit to the output current source that is required to limit the maximum power to the heating device.
6. **Selectable Temperature Display Units** – All temperature values displayed on the front panel LCD display can be presented in either °C, °F, or K. Internally, the unit operates strictly on °C formats. Due to the conversion factor used, values displayed in °F will not increment at even 0.1° steps as they do with °C and K.
7. **NORMAL vs. CYCLE Modes** – Two operating modes are possible with the TC200. In NORMAL mode, the unit operates as a single point controller, maintaining the set-point for as long as the user requires. In CYCLE mode, the user can program one to five distinct temperature levels. A “ramp” time (in minutes) can be programmed for each step to determine how long it will take to get from the starting temperature to the stopping temperature. A “hold” time (also in minutes) can be programmed to determine how long the system will stay at the stopping temperature before moving on to the next step. During the course of any step, CYCLE Mode can be paused, stopping the ramp or hold timers at their present count. Removing the paused function will resume the cycle at the same point at which it was paused.

8. **Sensor Alarms** – The TC200 can determine whether a temperature sensing element is short circuited or not installed (open circuit). If a short or open circuit occurs, the TEMP ACTUAL field in the main LCD display screen will read **!SENSOR!** If the sensor alarm occurs during normal operation, the output will immediately be disabled. The unit cannot become enabled again until the error is resolved.

**ATTENTION**

The TC200 can only determine shorted or open sensor connections; it cannot determine if the installed sensor does not match the programmed sensor selection. Care must be taken to ensure that the settings match the actual sensor used, or damage will occur to the heating system.

9. **Maximum Temperature Shutdown** – Based on the setting of the **TMAX** parameter discussed above, if the TC200 reads back a temperature value that equals or exceeds **TMAX**, the output relay will be opened and **!TMAX!** will be displayed in the MODE field of the main LCD display screen. The controller, however, will remain enabled. Once the system temperature lowers down to the set-point value, the output relay will be closed, connecting the controller to the heater again. If the temperature increases past **TMAX** again, the relay will open. If this cycle occurs three times, on the third time, the relay will open and the controller will automatically disable. The **TMAX** text will continue to be displayed until it is cleared manually by the user by either pressing the SELECT keypad while in the main screen, or by pressing the ENABLE keypad.

Chapter 5 Stand-Alone Operation

5.1. Initial Setup

1. Place the unit on a dry, level working surface.
2. Make sure the POWER switch on the front of the unit is in the OFF position (0).
3. Plug the female end of the provided AC line cord into the AC Input Receptacle on the rear of the unit. Plug the male end into a properly grounded AC socket.
4. Connect the heater to be controlled to the MAIN OUTPUT connector on the rear panel of the unit. Refer to page 34 for information on proper connections to the output connectors.

5.2. Turning the Controller On

1. Press the POWER switch to the ON position (I). If the AC line voltage is sufficient and the internal power supply in the unit is fully functional, the PWR ON indicator will light up and the LCD screen will display a brief message stating the model number and the firmware revision. After approximately 2 seconds, this message will scroll off of the screen and the main LCD screen will appear.
2. The default power-up settings for the main screen are always NORMAL Mode, heater disabled, the last active sensor type used, and the last temperature set-point that was active on the unit. To change these settings, see **Navigating the Front Panel** on page 11.
3. All parameters from the last working session with the controller will be loaded during unit initialization. These include: PID gain settings, “Tuning” offset, sensor selection (including the TH10K Beta value if applicable), Maximum Temperature **TMAX** setting, Maximum Power **PMAX** setting, the last display units used (°C, °F, or K), and all cycle mode parameters for the five programmable cycle steps.
4. If the heater has not been operated yet, the TEMP ACTUAL field on the LCD display should show a value appropriate for a “cold” system (somewhere around room ambient temperature). If it is noticeably different, you should double-check that the selected sensor (PTC100, PTC1000, TH10K) matches the actual sensor used in your heating system.

5.3. Enabling the Heater

1. Press and release the ENABLE keypad on the front panel to turn on the heater. At this time, the Heater ON indicator will immediately light up. If not, see page 36 for troubleshooting suggestions.
2. If successfully enabled, the STATUS field in the LCD screen will read “**ENABLED**” and the MODE field will read either “NORMAL” or “CYCLE” depending on the particular mode chosen.

5.4. Adjusting the Temperature in NORMAL Mode

The set-point temperature can be changed at any time while in NORMAL Mode, regardless of whether the controller is enabled, simply by pressing the **UP** or **DOWN** arrow keypads. Pressing the **UP** arrow will increment the temperature by 0.1°, and pressing the **DOWN** arrow will decrement the temperature by 0.1°. As with all of the numeric adjustments that can be done on the TC200, holding the arrow keypads down will accelerate the rate of increase or decrease the longer the arrow keypad is held down.

5.5. Turning the Heater Off

- When necessary, the heater output can be turned off by either pressing and releasing the ENABLE keypad or pressing the POWER switch to the OFF (0) position, which will turn off the entire unit.
- The heater will also turn off immediately if a shorted or open temperature sensor is detected. In that case, !SENSOR! will be displayed on the LCD screen.
- Whenever the unit is ON and the heater is not enabled, the status will be indicated as “DISABLED” on the LCD and the HEATER ON indicator will be turned off.

5.6. Navigating the Front Panel

5.6.1. Overview

- The front panel contains six keypads that can be used for various functions depending on what menu screen is actively displayed.
- The Main Display screen displays the selected temperature sensor, the basic operating mode (NORMAL or CYCLE), the current temperature set-point, the current actual temperature, and various status messages such as **ENABLED**, **DISABLED**, **!TMAX!**, and **!SENSOR!** alarms.
- There are five **MODE** screens: PID parameters, Sensor Select, **TMAX/PMAX** values, Units Display (°C, °F, or K), and NORMAL vs. CYCLE Mode.
- There is a sixth sub-menu for programming the CYCLE Mode parameters: Stop Temp, Ramp Time, and Hold Time.
- Use the **MODE** keypad to access the Mode screens.
- While a menu is displayed, use the **SELECT** keypad to move the flashing cursor to the various selection options.
- Pressing the **ENTER** keypad while in the Main Display screen and in NORMAL mode has no effect.
- Pressing the **ENTER** keypad while in the Main Display screen and CYCLE Mode will PAUSE the cycle. See **CYCLE Mode** on page 16 for more details.
- Pressing the **ENTER** keypad while in a Mode menu screen will accept and save the option that corresponds to the flashing cursor and advance you to the next menu screen or back to the MAIN screen, depending on the situation.
- Use the **UP** and **DOWN** keypads to change the set-point temperature while in the Main screen.
- Use the **UP** and **DOWN** keypads to change numerical options while in any of the Mode screens.
- Pressing the **MODE** keypad at any time while in a mode menu will do one of the following:
 - If you are in the PID Mode screen, pressing the **MODE** keypad will advance to the Sensor Select menu without changing any of the current PID values.
 - If you are in the Sensor Select screen, pressing the **MODE** keypad will advance to the **TMAX/PMAX** Mode screen without changing the sensor selection.
 - If you are in the **TMAX/PMAX** Mode screen, pressing the **MODE** key will advance to the Display Units Selection screen without changing the units.

- If you are in the Display Units Selection screen, pressing the **MODE** keypad will advance to the **NORMAL vs. CYCLE** Mode screen without changing the units.
- If you are in the **NORMAL vs. CYCLE** Mode screen, pressing the **MODE** keypad will advance to the Main screen without changing the Operating Mode selection.
- Pressing the **ENABLE** keypad at any time, in any screen* will either enable or disable the heater, depending on its current status.
 - * While in the Cycle Parameters screen, you can only disable the heater.
- **Special Functions** – While in the Main Display screen, the **SELECT** keypad will perform two special functions:
 - If you are using Thorlabs' gas cell heaters in conjunction with the auxiliary output, pressing the **SELECT** key will momentarily display the auxiliary heater's temperature. This function only works when the PTC100 sensor is selected.
 - If a **TMAX** error occurs, pressing the **SELECT** keypad will clear the error.

5.6.2. Selecting and Adjusting the Gains: P, I, D, and Tune

Changing the P, I, or D Gains

1. While in the Main Screen press the **MODE** keypad once.
2. The screen will now display the P, I, and D values as well as the text "**TUNE**" or "**DETUNE**".
3. The cursor will be flashing over the "P" for the proportional gain value.
4. Adjust the P gain using the **UP** or **DOWN** arrow keypads. The P gain is adjustable from 1 to 250.
5. Press the **SELECT** keypad to move the cursor to the "I" for integral gain.
6. Adjust the I gain using the **UP** or **DOWN** arrow keypads. The I gain is adjustable from 0 to 250.
7. Press the **SELECT** keypad to move the cursor to the "D" for derivative gain.
8. Adjust the D gain using the **UP** or **DOWN** arrow keypads. The D gain is adjustable from 0 to 250.
9. Press the **MODE** keypad to escape to the next Mode screen (Sensor Select) without making any changes to the current parameters.
10. Alternatively, press the **ENTER** keypad to accept any changes made to the P, I, or D values and return to the Main Display screen.

Note: The PID screen is the only Mode screen that will return directly to the Main Display screen upon pressing the **ENTER** keypad. All other Mode screens will save changes and advance to the next Mode screen.

Activating or Deactivating the TUNE Function

Note: The **TUNE** function is only accessible in **NORMAL** mode when the heater is enabled. It cannot be accessed at any time in **CYCLE** mode or when the heater is disabled.

1. While in the Main Display screen, press the **MODE** keypad once.
2. The screen will now display the PID values and “**TUNE**” or “**DETUNE**” depending on the status of the **TUNE** function.
3. Press the **SELECT** key three times to advance to the **TUNE/DETUNE** text.
4. Press the **ENTER** keypad once.
5. The **MAIN** screen will now be displayed.
6. Please refer to **TUNE** Function on page 17 for more information on tuning the TC200.

5.6.3. Selecting the Temperature Sensor: PTC100 vs. PTC1000 vs. TH10K

Programming the Appropriate Temperature Sensor

1. While in the Main Display screen press the **MODE** keypad twice.
2. The screen will now display PTC100, PTC1000, TH10K, and the Beta value.
3. The cursor will be flashing over the “P” for PTC100.
4. Pressing the **ENTER** keypad at this time will select the PTC100 and advance you to the next Mode screen (**TMAX/PMAX**).
5. Otherwise, press the **SELECT** keypad to move the cursor to the “P” for PTC1000.
6. Pressing the **ENTER** keypad at this time will select the PTC1000 and advance you to the next Mode screen (**TMAX/PMAX**).
7. Otherwise, press the **SELECT** keypad to move the cursor to the “T” for TH10K.
8. Pressing the **ENTER** keypad at this time will select the TH10K and advance you to the “B” for the Beta value within the same Mode screen.
9. Use the **UP** or **DOWN** keypads to adjust the Beta value in increments of 10 from 2000 to 6000. For entering exact Beta values, see **The Command Line Interface** on page 19 or **The TC200 Application Software** on page 19.
10. Pressing the **ENTER** keypad at this time will accept the Beta value and advance you to the next Mode screen (**TMAX/PMAX**).
11. Press the **MODE** keypad to escape to the next Mode screen (**TMAX/PMAX**) without making any changes to the current parameters.

Note: Any attempt to change the sensor while the heater is enabled will immediately disable the heater.

5.6.4. Selecting and Adjusting the Maximum Temperature and Power: TMAX and PMAX

Changing the TMAX or PMAX Values

1. While in the Main Screen display, press the **MODE** keypad three times.
2. The screen will now display the **TMAX** and **PMAX** values.
3. The cursor will be flashing over the “T” for the **TMAX** value.
4. Adjust the **TMAX** value using the **UP** or **DOWN** arrow keypads. **TMAX** is adjustable from 20.0 °C to 205.0 °C.
5. Press the **SELECT** Key to move the cursor to the “P” for the **PMAX** value.
6. Adjust the **PMAX** value using the **UP** or **DOWN** arrow keypads. **PMAX** is adjustable from 0.1 Watts to 18.0 Watts.
7. Press the **MODE** keypad to escape to the next Mode screen (Units Select) without making any changes to the current parameters.
8. Alternatively, press the **ENTER** keypad to accept any changes made to the **TMAX** or **PMAX** values, and then advance to the next mode screen (Units Select).

5.6.5. Selecting the Units Displayed: Celsius vs. Fahrenheit vs. Kelvin

The Main screen and Mode screens display various information regarding the output temperature. These values can be displayed as °C, °F, or K, depending on the user’s preferences.

Changing the Format of the Temperature Display

1. While in the Main Display screen, press the **MODE** keypad four times.
2. The screen will now display the Display Units Selection menu with the text “CELSIUS”, “KELVIN”, and “FAHRENHEIT”.
3. The cursor will be flashing over the “C” in CELSIUS.
4. Pressing the **ENTER** keypad at this time will select Celsius and advance you to the next Mode screen (NORMAL vs. CYCLE Mode).
5. Otherwise press the **SELECT** keypad to move the cursor to the “K” for KELVIN.
6. Pressing the **ENTER** keypad at this time will select Kelvin and advance you to the next Mode screen (NORMAL vs. CYCLE Mode).
7. Otherwise press the **SELECT** keypad to move the cursor to the “F” for Fahrenheit.
8. Pressing the **ENTER** keypad at this time will select Fahrenheit and advance you to the next Mode screen (NORMAL vs. CYCLE Mode).
9. Pressing the **MODE** keypad at any time will advance you to the next Mode screen without changing the display format.

5.6.6. Selecting the Operating Mode: NORMAL vs. CYCLE

Changing the Operating Mode

1. While in the Main screen press the **MODE** keypad five times.
2. The screen will now display “NORMAL MODE” and “CYCLE MODE”.
3. The cursor will be flashing over the “N” for NORMAL mode.
4. Pressing the **ENTER** keypad at this time will select NORMAL mode and advance you to the MAIN screen.
5. Press the **MODE** keypad to escape to the Main screen without making any changes to the current mode.
6. Otherwise, press the **SELECT** keypad to move the cursor to the “C” for CYCLE mode.
7. Press the **MODE** keypad to escape to the Main screen without changing to CYCLE mode.
8. Pressing the **ENTER** keypad at this time will select CYCLE Mode and advance you to the Cycle Parameters screen described in the following section.

Changing the Cycle Parameters

The Cycle Parameters menu is a sub-menu of the NORMAL vs. CYCLE Mode menu that can only be accessed if CYCLE Mode has been selected.

The Cycle Parameters can only be adjusted if the heater is disabled. You can navigate and review the parameter settings while a cycle is in progress, however.

Once you have accessed the Cycle Parameters menu you can make adjustments as follows:

1. Use the **SELECT** keypad to move the cursor to the parameter that you wish to change:
 - The STOP Temperature is located in the upper left, “T=nnn.n”.
 - The RAMP time is located in the upper right, “Rt=nnn m”
 - The HOLD time is in the lower left, “Ht=nnn m”
 - The STEP # is in the lower right.
2. Use the **UP** and **DOWN** arrow keypads to increase or decrease the parameters.
3. Use the **SELECT** keypad to advance to the various parameters.
 - The valid range for the STOP temperature is 20.0 °C to **TMAX** or 200.0 °C, whichever is lower.
 - The valid range for the RAMP and HOLD times is 1 to 999 minutes.
4. Pressing the **ENTER** keypad at any time will accept the changes and advance you to the next step's parameter screen. After step 5, you will be returned to the Main screen.
5. Pressing the **MODE** keypad at any time will return you to the Main screen without changes.

Note: The cycles will initiate the next time the heater is enabled.

5.7. CYCLE Mode

- The STOP temperature determines the final temperature that the system will try to go to in the amount of time determined by the Ramp time value.
- The RAMP time is how long it will take to go from a starting temperature to a stopping temperature.
- The HOLD time is how long the cycle will stay at the STOP temperature before advancing to the next step, also known as “dwell time”.
- The initial starting temperature is determined to be whatever the TEMP SET value is at the start of a cycle. After that, the starting temperature of the subsequent step is the stopping temperature from the previous step. That is, the stopping temperature for step 1 will be the starting temperature for step 2, and so forth.
- The number of steps can be reduced by programming in the same STOP Temperature for any steps that you don't need. That is, if you only want one cycle that ramps from TEMP SET to the STOP temperature over a certain amount of time, simply program in the same STOP temperature for steps 2 – 5. Once the step 1 HOLD time expires, the cycle will “jump” over steps 2 – 5 and resume operation in NORMAL mode.
- NOTE: By the same token, if your starting value for TEMP SET is the same as your stopping value for step 1, then step 1 will appear to be jumped over. If ALL of your stopping values are the same as your TEMP SET value then it will appear as though the cycle never happened.
- During the course of a cycle, the following actions can be taken:
 1. While in the Main screen, pressing the **ENTER** keypad at any time will cause the scan to pause. Once paused, the cycle will hold at the current ramp or hold time count and remain there with the heater still enabled. Pressing the **ENTER** keypad again will cause the scan to resume at the current channel.
 2. While in any screen, pressing the ENABLE keypad at any time will cause the cycle to terminate completely, turning off the heater, disabling the output, and changing the operating mode to NORMAL.
 3. At no time during an active cycle can the set-point be adjusted from the Main screen using the **UP** or **DOWN** arrow keypads.
 4. At no time during an active cycle can any of the cycle parameters be adjusted.
- CYCLE Mode will be terminated and changed back to NORMAL Mode as follows:
 - Letting a cycle completely run its course will change the mode back to NORMAL, and the temperature will remain at the last stopping temperature with the heater still enabled.
 - Pressing the ENABLE keypad during an active cycle will terminate the cycle and disable the heater.
 - From the main screen, press the **MODE** keypad five times:
 - The NORMAL vs. CYCLE Mode menu will come on, with NORMAL mode as the active selection.
 - Pressing the **ENTER** keypad at this point will terminate the cycle at the current temperature and return you to the Main screen. The heater will remain enabled.

5.8. TUNE Function

- The TUNE function is a manually enabled feature that digital calculates the offset between the TEMP SET value and the TEMP ACTUAL value. The offset is only calculated at one time and is not actively adjusted after that point.
- Once the TUNE function is activated, the TEMP ACTUAL value should slowly adjust to within 0.1 °C of the TEMP SET value. The rate of adjustment and accuracy depends on the PID settings.
- The TUNE function should only be set once the output has reached a final value and has settled completely. Activating a TUNE function while the temperature is changing will result in less than ideal performance.
- If the unit is being DETUNED, the output will develop an offset between the set-point and actual temperatures.

Note: For best results, the I and D values should be set to zero. The output must be completely settled before starting a TUNE function. If for whatever reason the output needs to be retuned, you must select DETUNE from the Gains mode screen, wait for the offset to settle out, and then select TUNE again.

- The offset value calculated by any tune function will be saved to memory and will be loaded on the next power up of the unit.
- To determine if an offset value exists from a tuning action, simply enter the PID Gains mode screen. If the text reads DETUNE, then there is an offset preset.
- In general, the offset should be consistent for a large range of temperatures for the same heating system. It may be necessary, however, to detune and then re-tune after changing set points.
- Adjustments to the P, I, or D gains will affect the offset value and therefore, if the P, I, or D values are adjusted after a tuning action has been done, the offset will be detuned.
- The TUNE function can only be set while in NORMAL Mode. It is not accessible while operating in CYCLE Mode. Once an offset is tuned in NORMAL mode, however, the tuning action will still apply to the target temperatures set in the cycle parameters.

5.9. TMAX Function

- The **TMAX** function allows the user to set the maximum temperature to which the control will operate.
- The TEMP SET set-point temperature will be limited to the current **TMAX** or 200.0 °C, whichever is lowest. If the **TMAX** value is adjusted to a value lower than the current TEMP SET value, the TEMP SET value will be changed to match **TMAX**. Note: The capability to attain Maximum Temperature is load dependent.
- The STOP temperature values in the cycle parameters are limited to the current **TMAX** or 200.0 °C, whichever is lowest. If the **TMAX** value is adjusted to a value lower than any of the current STOP temperature values, the STOP temperature values will be changed to match **TMAX**.
- If the TC200 reads back a temperature value that equals or exceeds **TMAX**, the output relay will be opened and **!TMAX!** will be displayed in the MODE field of the Main Display screen. The controller, however, will remain enabled. Once the system temperature reduces down to the TEMP SET set-point value, the output relay will re-close, connecting the controller to the heater again. If the temperature increases past **TMAX** again, the relay will re-open. If this cycle occurs three times, on the third time, the relay will open and the controller will automatically disable. The **TMAX** text will continue to be displayed until it is cleared manually by the user by either pressing the **SELECT** keypad while in the Main screen, or pressing the ENABLE keypad.

- If the temperature stabilizes to TEMP SET after having crossed the **TMAX** threshold less than three times, the **!TMAX!** alarm will remain active in the Main Display screen to alert a user to the fact that the system exceeded **TMAX** momentarily. The **!TMAX!** display can be cleared by pressing the **SELECT** keypad while in the Main Display screen.
- Pressing the **SELECT** keypad while in the Main Display screen will always clear the **TMAX** count and resets the alarm.
- Pressing the **ENABLE** keypad at any time with a **TMAX** alarm present will disable the heater and clear and reset the **TMAX** alarm.

5.10. Sensor Alarm

- The TC200 can determine whether a temperature sensing element is short circuited or not installed (open circuit). If this occurs, the TEMP ACTUAL field in the Main LCD display screen will read **!SENSOR!** If the sensor alarm occurs during normal operation, the output will immediately be disabled. The unit cannot become enabled again until the error is resolved.



ATTENTION



The TC200 can only determine shorted or open sensor connections; it cannot determine if the installed sensor does not match the programmed sensor selection. Care must be taken to ensure that the settings match the actual sensor used, or damage will occur to the heating system.

- A common sense approach to verifying the proper sensor is selected is to simply connect a heating system to a unit that has been sitting at room ambient temperature for a while. Observe the TEMP ACTUAL value displayed on the TC200. If the sensor has been properly programmed, the display will show a value corresponding to the room ambient temperature.

5.11. Setting the PID Gains

- The PID gains determine the overall stability and accuracy of the entire heating system. Incorrect values, especially for the Integral (I) gain, could result in undesired overshoots and instabilities.
- A good approach to setting these values is to start with a mid-range value (125) for the P gain and to set both I and D gains to zero (0).
- Enable the heater and observe the response and settling times. Typically, the system will undershoot the set-point and settle to a value below TEMP SET. Despite the offset, the temperature should remain fairly stable.
- If the temperature offset is too great (greater than 3 to 4°), an increase in P gain might be required.
- The offset can now be adjusted out by setting the I gain to a suitable value. **Always** start with a low value (typically less than 10). Observe any changes in the system response after each adjustment to I gain. If the value is too large, you will observe overshoot and oscillations about the set-point. If it is too low, you will not remove the offset.
- After arriving at a value for I gain, apply a Step function to the system by increasing the TEMP SET value by a few degrees. Observe the response and adjust the gains accordingly.
- The D gain is the hardest to observe any influence on, as it generally affects the rate at which the system responds to disturbances. For most small heater systems being controlled by the TC200, a value of zero (0) for the D gain is sufficient for good operation.

Chapter 6 Operating from a Computer

6.1. Overview

- The TC200 Temperature Controller is fully operational from a remote computer via a USB interface.
- Connection from the computer to the TC200 is made with a standard B, USB cable.
- The TC200 can be accessed directly using a command line interface and any Terminal Communications software, such as HyperTerminal.
- The TC200 can also be controlled using the TC200 Application Software provided with the unit.

6.2. Installation

Please note that you will require administrative rights on the Computer on which you plan to install the TC200 Software.

Prior to connecting the TC200 to your computer, the **USB drivers** must be installed. Insert the CD packaged with the TC200 into the CD drive of your PC and you should be presented with the following “CD-Starter” dialog box:



Figure 2 CD Starter Screen

6.2.1. USB Driver

Please click **“Install Driver”** as this will install the following drivers noted below to allow the TC200 to communicate with your PC. Once the Drivers are installed you will be presented with the “CD-Starter” Dialog box again.

Drivers Installed: **USB, IVI Runtime Engine, VISA Driver, CVI Runtime Engine**

Note: The USB interface is performed using an RS232 to USB converter. Your computer will reflect this as a **COM Port** in your Device Manager, **not a USB port**.

6.2.2. Software Installation

Connect a standard B, USB cable between the TC200 and an available COM port on your computer

You may choose to install the TC200 Software by clicking **“Install Software”**, follow the On-Screen instructions and dialog boxes presented, to complete the installation. After the software installation is complete the “CD-Starter” is presented again.

Note: You may choose to install the software for all users on your computer or just you.

If using Windows XP, you may be presented with the following dialog box:

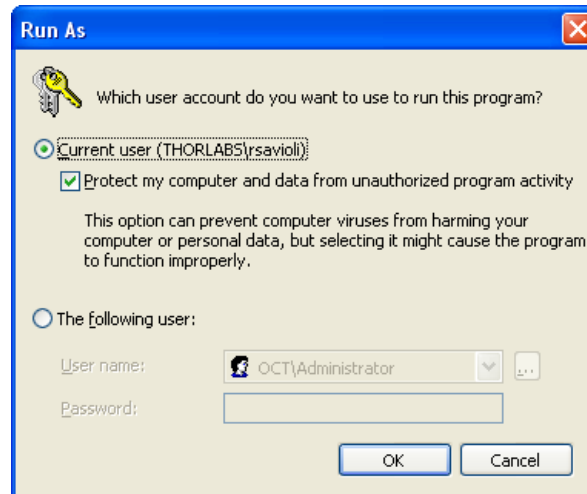


Figure 3 Admin Control – Windows XP

You may choose which user(s) are granted access to the TC200 software. To install the software for all users, you must have administrative rights, if you do not, please contact your Computer Admin. If you have trouble installing the software as noted above, you may have to **Un-Check “Protect my computer and data from unauthorized program activity”**.

If using Windows 7, you will be presented the following dialog box during your installation:

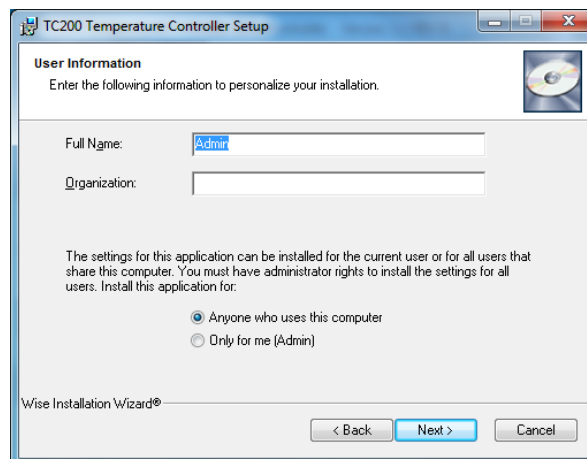


Figure 4 Admin Control - Windows 7

To install the software settings for all users, you must have admin rights to the computer.

Set-Up and Connection

In order for the TC200 to communicate with the computer please make sure the **USB Driver** are installed. Refer to section 6.2.1 for further details.

Note the TC200 utilizes Serial Communication to USB converter in order to communicate with your computer. The Software is limited to communicate with COM Port Numbers 1 and 4 only.

When the TC200 is connected to the Computer, it is assigned a “**COM Port Number**”. It is critical to know which “COM” port number the Computer has assigned the TC200, since the software looks for particular number in order to communicate. Use to guide below to help determine which “COM Port” number your Computer has assigned the TC200 and if you need to change the port number between 1 and 4.

Windows XP:

1. Right-Click on **My Computer** and click **Properties** to open System Properties.
2. In the System Properties window click the **Hardware tab**.
3. In the Hardware tab, click the **Device Manager** Button.

Windows 7:

1. Right-Click on **My Computer** and click **Properties** to open System Properties.
2. Click on **Device Manager**.

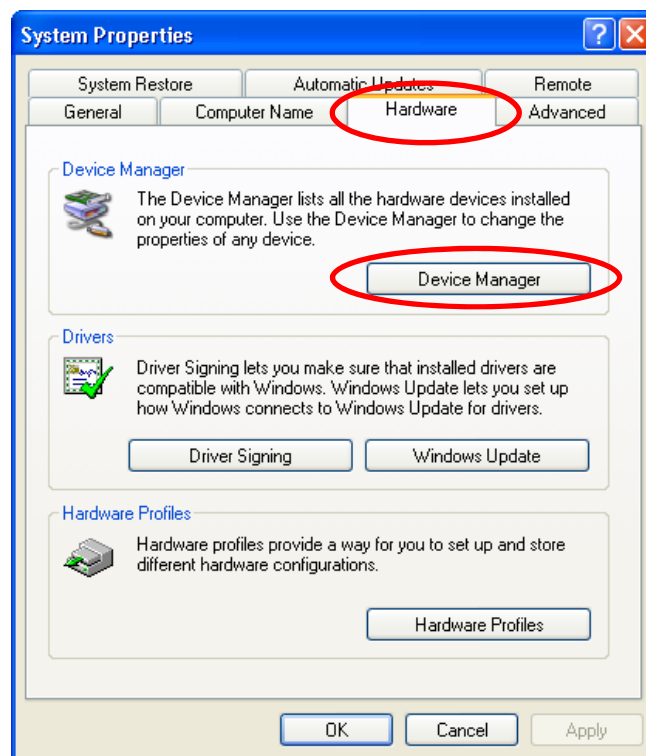


Figure 5 Windows XP

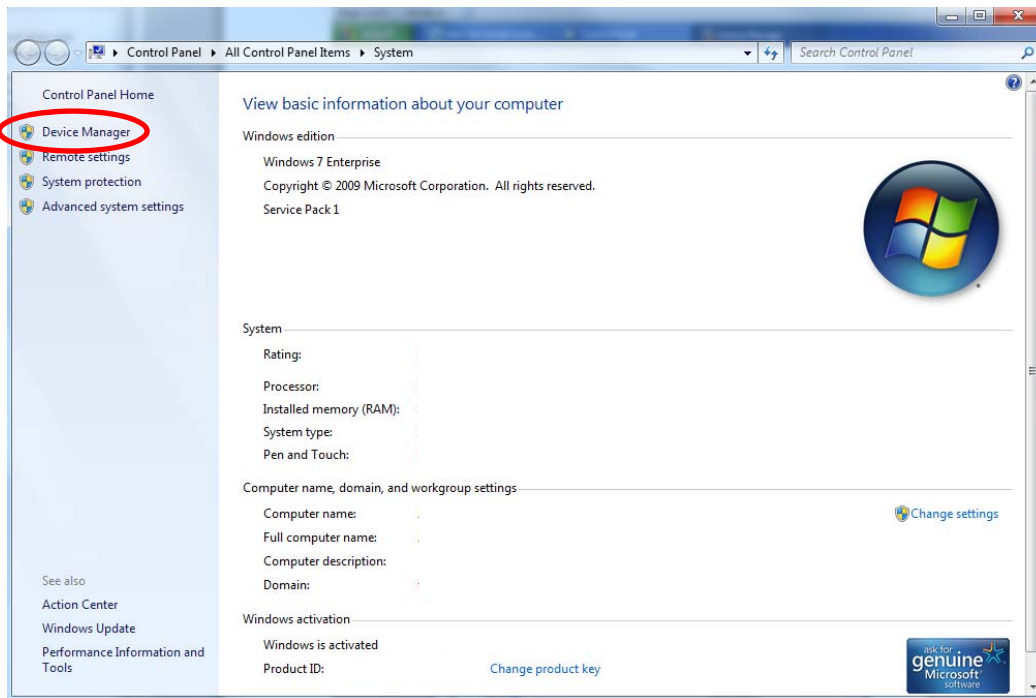


Figure 6 Windows 7

3. In **Device Manager**, double-click **Ports (COM & LPT)**
4. Find "**USB Serial Port**" and note the **COM Port Number** in parenthesis.
5. The **COM Port** number should be between 1 and 4.

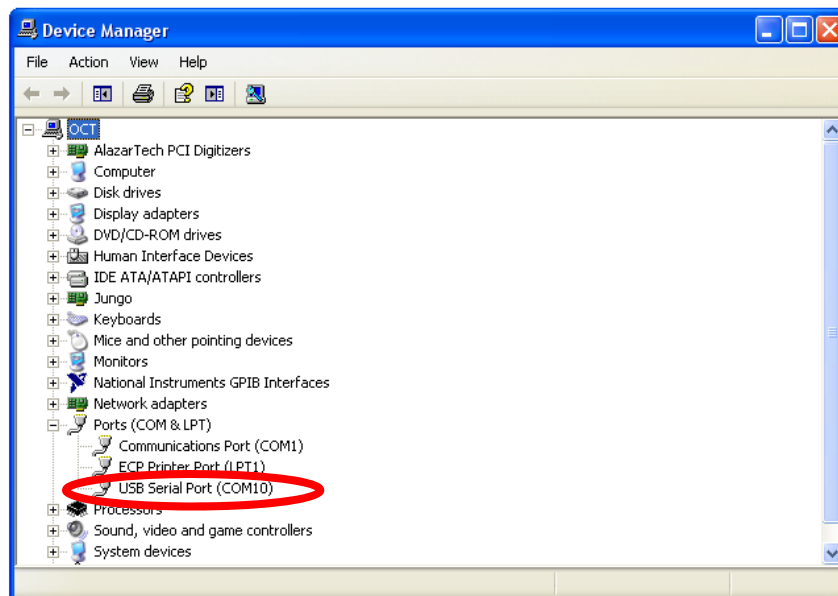


Figure 7 Windows XP

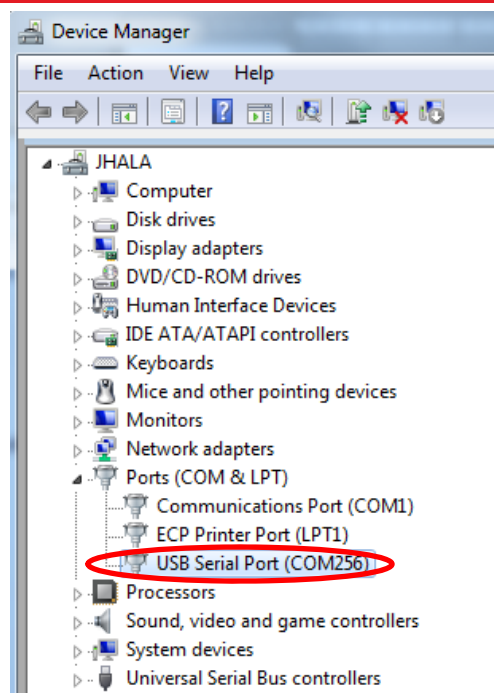


Figure 8 Windows 7

6. Right-Click **USB Serial Port** and click on **Properties**
7. Click on **Port Settings** Tab.
8. Use the drop-down menus and make sure the settings **are as indicated** in figure below then click **Advanced**:

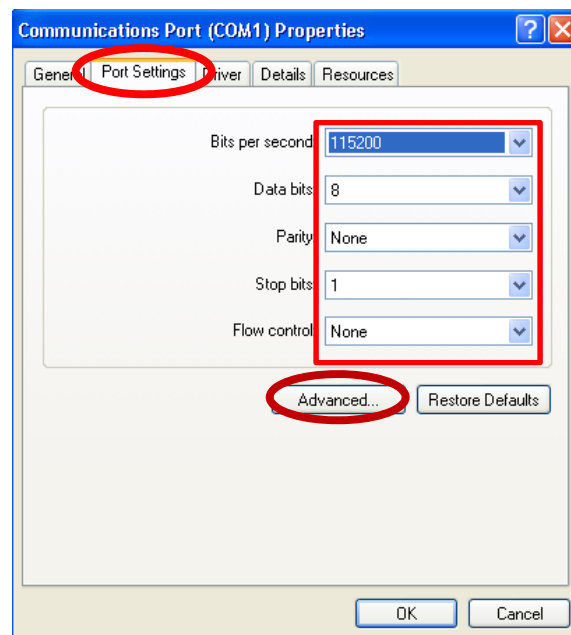


Figure 9 Windows XP

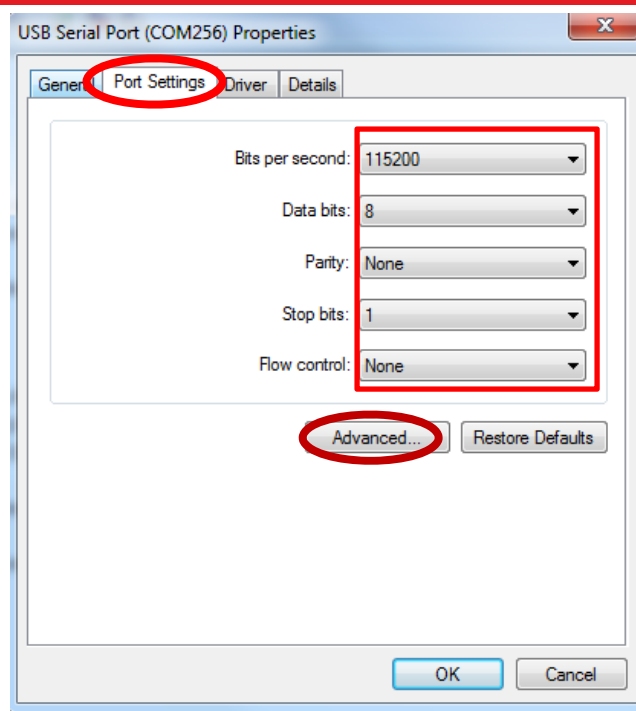


Figure 10 Windows 7

9. Use drop down menu under **COM Port Number** and select **COM** port number between 1 and 4. If all the COM ports (1 to 4) are in use detach any connected peripherals to the Computer and attach TC200 first. Follow steps 1 to 9 again.

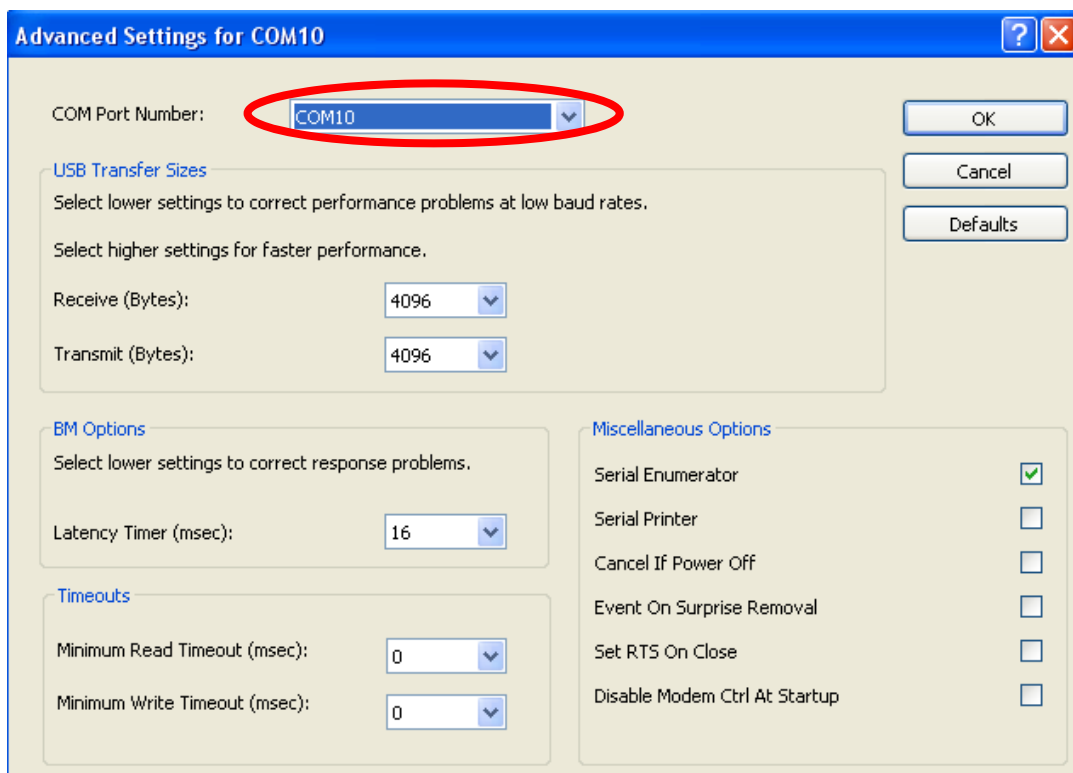


Figure 11 Windows XP

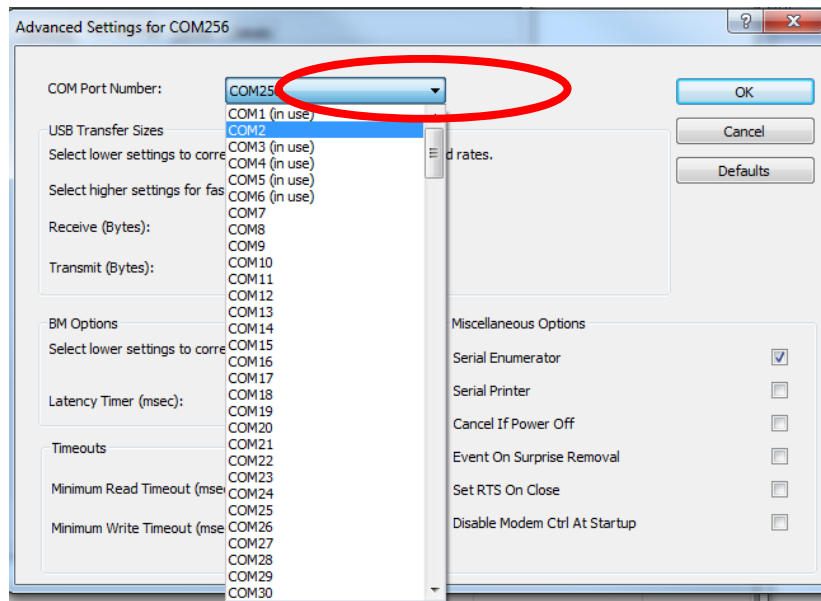


Figure 12 Windows 7

10. Click **OK** in the **Advanced Settings** window and **USB Serial Properties** window.

6.2.3. Software Set-Up

1. Open **TC200 Software Application**
2. When running the software, user will be presented with the following screen:

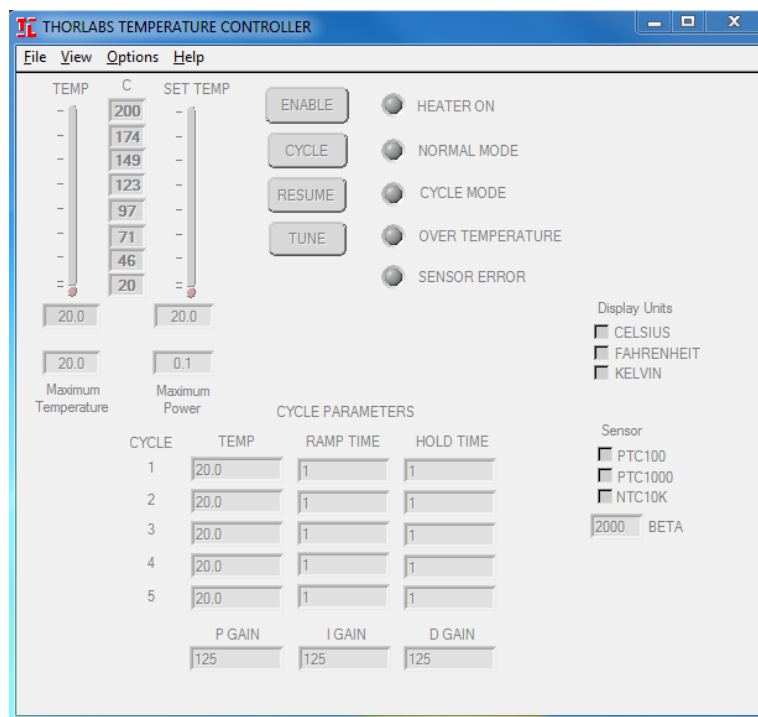


Figure 13 Closed Connection

3. Click **Options** and navigate to **Serial Connection** and then **COM Port**.

Note: The baud rate is fixed at **115200**.

4. Select TC200 COM Port number between 1 and 4. Refer to **Set-Up and Connection** to identify **COM Port** number.
5. Click **File** menu and choose **Open Connection**.

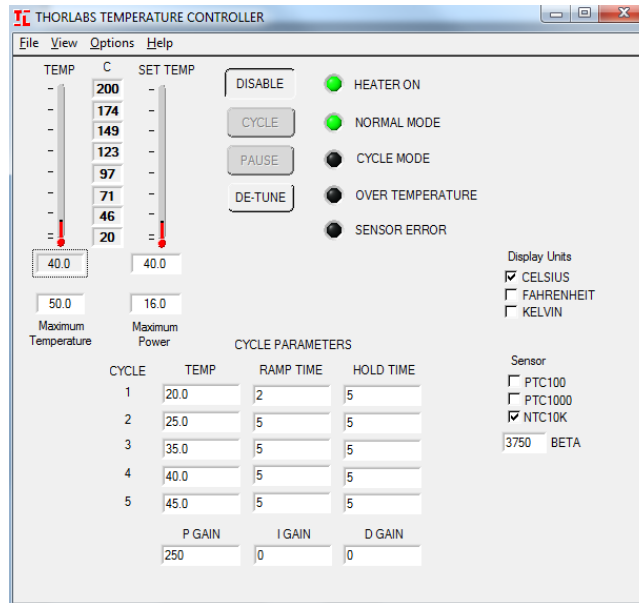


Figure 14 Open Connection

Operating in NORMAL Mode

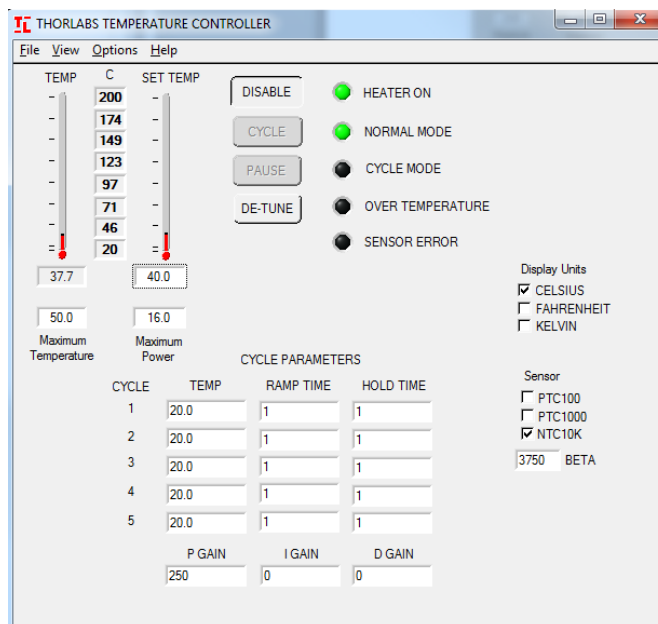


Figure 15 Active Connection – Normal Mode

- Figure 15 shows an active connection to a unit set to 40.0 °C and configured for NORMAL Mode.
- To enable the heater, click on the button labeled ENABLE.
- Any changes made from the Application Software will be reflected on the LCD of the TC200.
- Any changes made from the TC200 will also be reflected on the Application Software.
- The time for these updates to take effect varies with the computer.

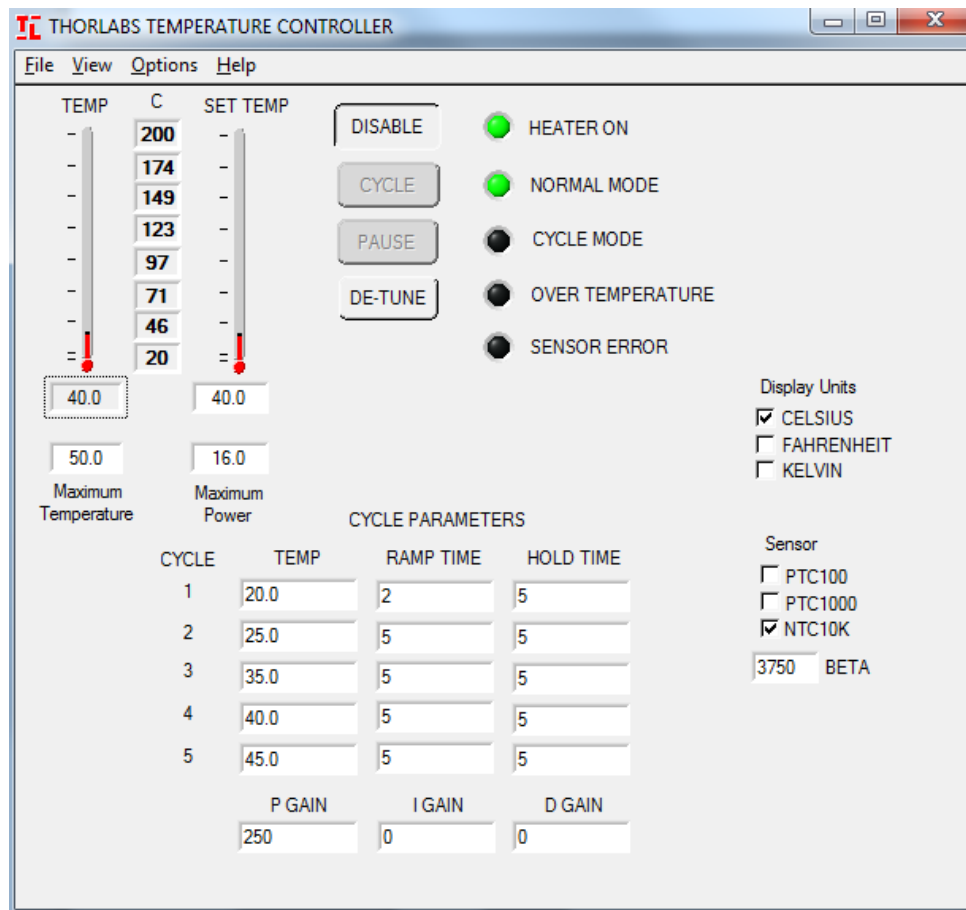


Figure 16 Heater Enabled in NORMAL Mode

1. Once connected, the SET TEMP can be changed by one of two methods:
2. Click and hold the TEMP SET slide control and drag the slider to the next desired temperature.
3. Double click in the TEMP SET window to highlight the temperature text, and enter the value for the temperature from 20.0 °C to TMAX or 200.0 °C.
 - As with the other operating methods, the SET TEMP can be changed at any time other than CYCLE Mode, regardless of whether the heater is enabled.
 - To disable the heater, click on the DISABLE button.

Operating in CYCLE Mode

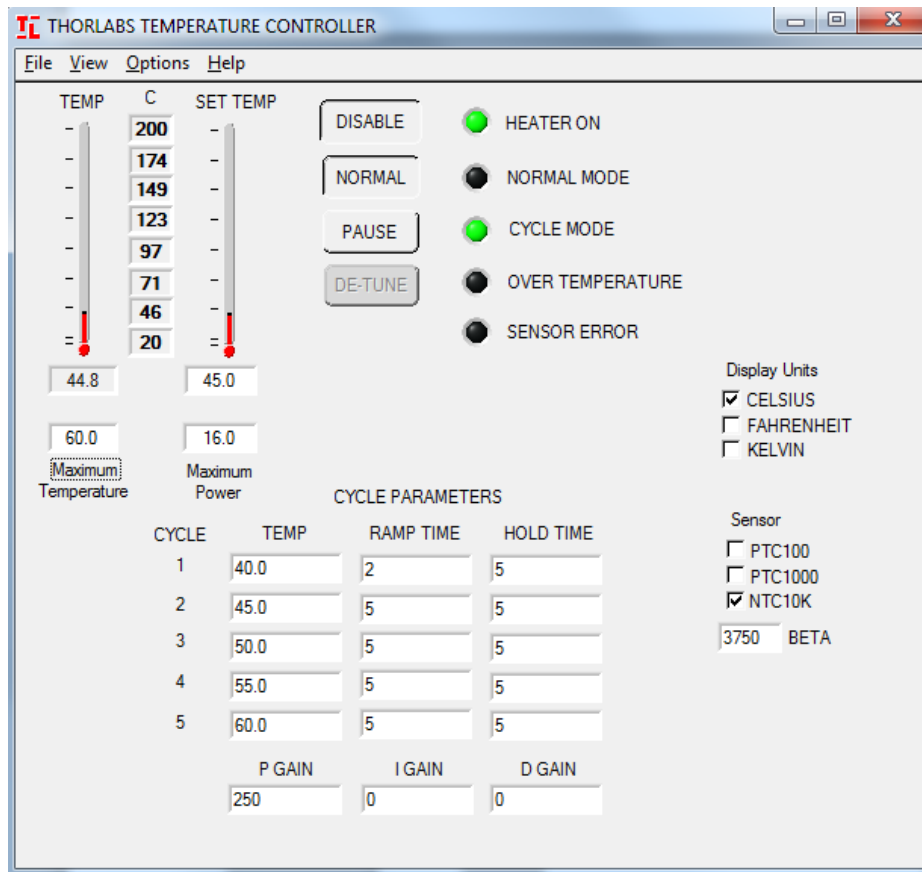


Figure 17 Heater Enabled in CYCLE Mode

Changing the TC200 from NORMAL Mode to CYCLE Mode

4. With the heater disabled, click on the **CYCLE** button.
5. The **CYCLE** MODE indicator will now turn on.
6. Clicking on the ENABLE button will initiate the **CYCLE**.
7. To return to NORMAL mode click the NORMAL or ENABLE button.
8. To PAUSE a **CYCLE**, click on the PAUSE button.

Changing the CYCLE Mode Parameters

1. All of the **CYCLE** mode parameters are visible on the GUI screen. To change any or all of the parameters, simply double click on the value you wish to change and enter in a valid new value.
2. Hitting a carriage return (**ENTER** key), tab key, or clicking on any other box on the GUI will cause the program to accept the new value entered and send it to the TC200.

Note: Parameters cannot be changed while a **CYCLE** is in progress.

Changing other Parameters

- Changing any of the other values is done in much the same manner as described previously. Text box values can be entered by double clicking the text box and entering a new value, followed by the **ENTER** key, tab key, or clicking elsewhere on the screen.
- Items such as the sensor and display units are changed by checking the appropriate boxes.
- Any out-of-range values that might be entered will be rejected and you will be prompted to re-enter a valid value.

Hiding Graphics in the GUI

- Various components of the GUI can be hidden from view to provide a cleaner, less cluttered display.
- Click on the View menu and select or de-select the various choices to be displayed on the screen.

Auxiliary Temperature

The Auxiliary Temperature cannot be displayed on the GUI at this time. Press the **SELECT** key while in the Main display screen or use the **taux?** query in the command line mode.

Disconnecting from the TC200

- To disconnect from the unit, choose **Close Connection** from the **File** menu.
- Exiting the program is done by either clicking on the X in the upper right hand corner of the screen or choosing EXIT from the FILE menu.

6.3. The Command Line Interface

6.3.1. Setup and Connection

1. Open your terminal interface program and, referring to documentation specific to your program, set up the terminal for the COM Port to which you have connected. Refer to Section 6.2.3 to determine the **COM Port number**:

Parameter	Value
Baud Rate	115200 Bits Per Second
Data Bits	8
Parity	None
Stop Bits	1
Flow Control	None

2. Apply AC power to the TC200, turn the TC200 on (see page 10), and wait for the unit to complete its power-on initialization.
3. Press the **ENTER** keypad on your computer. If the connection is working, you will receive the following message on your terminal:
 - **Command error CMD_NOT_DEFINED**

4. Followed immediately by the prompt:
 - >
- The basic command structure consists of two types: commands and queries, both of which are sent to the TC200 by a carriage return (CR) or by pressing the **ENTER** key on your computer.
- Most commands follow a format of:
 - **Command = Argument (CR)**
- **Command** is a keyword and **Argument** is a numerical value always followed by a carriage return (CR). The following section gives a listing of all command keywords.
- All queries follow a format of:
 - **query? (CR)**
- **Query** is a keyword always followed by a question mark (?) and carriage return (CR). The following section gives a listing of all query keywords.

6.3.2. Terminal Commands and Queries

- All commands and queries are in **lower case** letters.
- All temperature inputs and read backs are in °C only, regardless of what the display units are for the front panel LCD of the TC200.

Command/Query	Function	Description
ens	Toggle Enable State	If the unit is disabled, ens will enable the unit. Otherwise, it will disable.
tset	Set Temperature	tset=nnn.n (20.0 to 200.0 to TMAX)
tset?	Get TEMP SET Value	Returns the current value of TEMP SET.
tact?	Get Current Temperature	Returns the current value of TEMP ACTUAL.
temps?	Get TEMP SET and TEMP ACTUAL values	Returns TEMP SET and TEMP ACTUAL.
stat?	Status Query	Returns the Status Byte (see page 32).
mode	Assign Operating Mode	mode=normal or mode=cycle
pgain	Set P Gain	pgain=nnn (1 to 250)
igain	Set I Gain	igain=nnn (0 to 250)
dgain	Set D Gain	dgain=nnn (0 to 250)
pid?	Get PID Gains	Returns P, I, D values, respectively.
unit	Set Degree Units - °C, °F, or K	unit=c, unit=k, or unit=f
sns	Select Sensor	sns=ptc100 or sns=ptc1000 or sns=th10k
sns?	Get Sensor	Returns current sensor selection.
beta	Set TH10K Beta Value	beta=nnnn (2000 to 6000)
PMAX	Set Max Power	PMAX=nn.n (0.1 to 18.0)
TMAX	Set Max Temperature	TMAX=nnn.n (20.0 to 205.0)
PMAX?	Get Max Power	Returns current PMAX value.
TMAX?	Get Max Temperature	Returns current TMAX value.
beta?	Get TH10K Beta Value	Returns current Beta value.
stop	Set StopTmp	stop=nnn.n (20.0 to 200.0 or TMAX- see page 32)
ramp	Set Ramptime	ramp=nnn (1 to 999- see page 32)
hold	Set Holdtime	hold=nnn (1 to 999- see page 32)
cycle	Set Step Number	cycle=n (1 to 5- see page 32)
cycles?	Cycle Mode Parameters	Returns cycle parameters for all 5 steps. (see page 32)
pause	Pause Cycle	pause (cr). Initiates or terminates a pause to cycle mode.
config?	Get Current Configuration	Returns all pertinent set-up parameters (see page 33).
tune	Tune Temperature	tun(cr). Initiates or terminates (detunes) a tuning function.
tune?	Is Tune Function Set?	Returns offset value. "O" represents no tune performed.
commands?	Commands Query	Returns a list of available commands.
id?	Identification Query	Returns the unit identification string.
*idn?	Identification Query	Returns the unit identification string.
taux?	Get Temperature of Auxiliary Heater	Returns the current value of Aux Temp.

The Status Byte

The “Status Byte” is an 8-bit hexadecimal value that is returned as part of the **stat?** query. Each bit corresponds to the following definitions to provide a snapshot of the status of the unit at any given time:

Status Byte Definitions		
Bit 0	0 = Disabled	1 = Enabled
Bit 1	0 = Normal Mode	1 = Cycle Mode
Bit 2	0 = TH10K	1 = PTC100 (sensor select bit one)
Bit 3	0 = See Bit2	1 = PTC1000 (sensor select bit two)
Bit 4	0 = See Bit5	1 = degrees C (unit select bit one)
Bit 5	0 = Degrees K	1 = Degrees F (unit select bit two)
Bit 6	0 = No Sensor Alarm	1 = Sensor Alarm
Bit 7	0 = Cycle Not Paused	1 = Cycle Paused

If a **TMAX** alarm is also present when the **stat?** query is sent, the text “**TMAX ERROR**” will also be returned.

Setting the CYCLE Parameters from the Command Line

The **CYCLE** parameters (STOP temp, RAMP time, and HOLD time) can be programmed from the command line interface as follows:

1. Set the Step number to which the three parameters will apply by typing **cycle=n**, where n represents the Step number (1 to 5).
2. Enter valid values for the STOP temp by typing **stop=nnn.n** (20.0 to 200.0 or **TMAX**)
3. Enter valid values for the RAMP time by typing **ramp=nnn** (1 to 999)
4. Enter valid values for the HOLD time by typing **hold=nnn** (1 to 999)

Until the **CYCLE** number is changed to another value, any values entered for STOP, RAMP, or HOLD will apply to the current value of **CYCLE**.

Typing the **cycles?** query will return a string of fifteen comma-delineated numbers: five groups of three values. Each group of three values represents the STOP temp, RAMP time, and HOLD time for each successive cycle step. The value of the STOP temp is an integer value ten times greater than the actual temperature value. For example, a value of 600 represents 60.0 degrees.

The Configuration Command

Typing **config?** into the command line interface will return a list of all of the pertinent set up parameters to allow a user to view all items at a glance. The following is a typical return:

```
> config?  
Tset = 54.3 C  
Pgain = 126, Igain = 0, Dgain = 0  
Sensor = PTC100  
TMAX = 200.0 C  
PMAX = 15.9 Watts  
Temperature Display Units are CELSIUS  
Unit is Normal Mode  
Step1:  
StopTemp = 60.0 C, RampTime = 1 m, HoldTime = 5 m  
Step2:  
StopTemp = 70.0 C, RampTime = 5 m, HoldTime = 5 m  
Step3:  
StopTemp = 80.0 C, RampTime = 5 m, HoldTime = 5 m  
Step4:  
StopTemp = 90.0 C, RampTime = 5 m, HoldTime = 5 m  
Step5:  
StopTemp = 100.0 C, RampTime = 5 m, HoldTime = 5 m
```

Chapter 7 Output Connector Pin-Outs

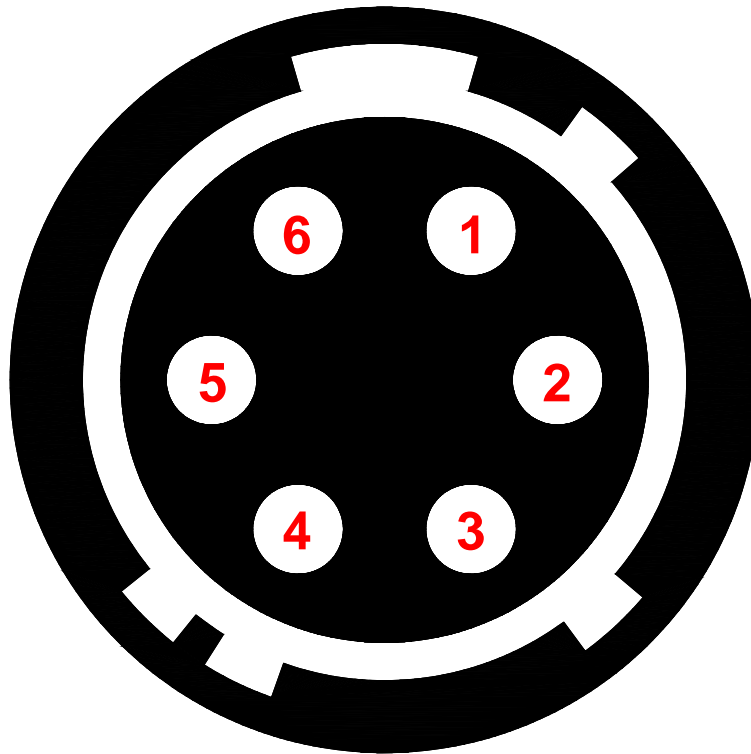


Figure 18 Detail of Main and Auxiliary Connector (HIROSE HR10A-7R-6S)
As Viewed from the Rear Panel

Pin Assignments	
Pin 1	Heater Output Positive
Pin 2	Heater Output Return (Ground)
Pin 3	Reserved (Do Not Connect to this Pin)
Pin 4	Sensor Input (+)
Pin 5	Sensor Input (Ground)
Pin 6	Reserved (Do Not Connect to this Pin)

Use HIROSE connector **HR10A-7P-6P (73)** to mate with the TC200 output connectors.

Chapter 8 Temperature Sensor Specifications

The TC200 is compatible with two types of Platinum Thermistors: PT100 and PT1000. The TC200 is also compatible with the TH10K thermistor. The following specifications are used for determining the set-point and read back values for these types of thermistors.

8.1. PT100 and PT1000

For the temperature range of 0 to 850 °C:

$$R_T = R_0(1 + A * T + B * T^2)$$

Where:

$$A = 3.9083 \times 10^{-3} \text{ } ^\circ\text{C}^{-1}$$

$$B = -5.775 \times 10^{-7} \text{ } ^\circ\text{C}^{-2}$$

R_T is the resistance in Ω at temperature T

T is the temperature in $^\circ\text{C}$

$R_0 = 100 \Omega$ for the PT100

$R_0 = 1000 \Omega$ for the PT1000

8.2. TH10K

$$R_T = 10,000 * e^{\beta[(\frac{1}{T}) - (\frac{1}{298})]}$$

Where:

R_T is the resistance in Ω at temperature T

T is the temperature in K

β is the constant associated with the particular thermistor

Chapter 9 Troubleshooting

The following table describes some typical problems that may be encountered while using the TC200 and possible solutions to these problems.

Problem	Solution
Unit does not turn on when switching the power switch to the ON position.	<ol style="list-style-type: none"> 1. Make sure AC line cord is fully inserted into the AC Input receptacle and plugged into an outlet providing 100 to 240 VAC. 2. Fuse(s) may be open. Refer to page 37 for information on replacing open fuses. If the problem persists, please return the unit to Thorlabs for evaluation.
Unit does not enable the heater when pressing the ENABLE keypad.	Make sure that a compatible temperature sensor is installed. If one is not, you should see a message that says “!SENSOR!” on the front panel LCD.
I can't adjust the TEMP SET value using the UP/DOWN arrow keypads.	If you are operating in CYCLE mode, you will not be able to make adjustments to the set-point using the UP/DOWN keypads in the Main screen. If you need to make adjustments, first terminate CYCLE mode and either re-program the CYCLE parameters (see page 15) or operate the unit in NORMAL mode.
I can't adjust the TEMP SET value above a certain value that is below the 200.0 degree maximum capability.	The TEMP SET value is limited by the TMAX maximum temperature setting. If you need to operate at a higher temperature, you must first increase TMAX.
When I reach my TEMP SET value, the unit displays !TMAX!	The TMAX value is the same as the TEMP SET value. Either increase the TMAX value or lower the TEMP SET value.
The unit appears to be holding the TEMP SET value, but there is a !TMAX! message on the display.	The unit exceeded the TMAX setting at some point, but during the reset phase it settled to the correct level. This is normal; simply press the SELECT keypad from the Main screen to clear the alarm.
The unit is enabled but does not seem to be driving the heater.	<ol style="list-style-type: none"> 1. The PMAX value is too low. Increase the PMAX value to the maximum rating of the heater you are driving. 2. The output connector is not fully inserted into the MAIN OUTPUT connector.
The unit overshoots the set-point by a large amount.	<ol style="list-style-type: none"> 1. Check your I gain setting. It may be too high and if so, should be lowered. 2. You have a sensor installed, but it is the wrong type.
I can't connect to the TC200 over the USB com port.	<ol style="list-style-type: none"> 1. Make sure that the com port is configured correctly for the unit. Refer to page 29 for the correct com port settings. 2. The incorrect com port is selected on your terminal program or TC200 application. 3. USB driver was not install. See Page 19

Chapter 10 General Maintenance

10.1. AC Line Voltage

Your TC200 Series Temperature Controller will operate from AC line voltages ranging from 100 VAC to 240 VAC at 50 – 60 Hz. There is no need to configure the unit for specific line voltages.

ATTENTION

**Use only 250 mA, 250 VAC, Type T, 5x20 mm style fuse.
(IEC 60127-2/III, Low Breaking capacity, slow blow)**

10.2. Installing Fuses

If for some reason you need to replace an open fuse, you must perform the following procedure:

1. Remove any AC Input cords that may be connected to the unit.
2. Remove the cover of the unit by removing the two 4-40 Phillips head screws located on the bottom rear of the unit and sliding the cover off.
3. Refer to Figure 19 below. Locate the two Fuse Holders near the AC Input Module towards the back of the unit. Remove the cover to each fuse holder. The fuse is installed in the cover. Remove the existing fuse and install the appropriate replacement fuse.
4. Reinstall the cover and replace the two 4-40 Phillips head screw.

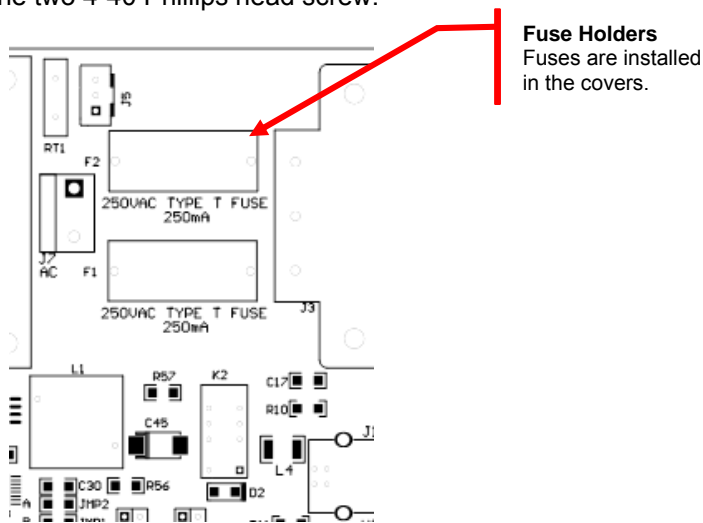


Figure 19 Location of Fuse Holders

10.3. General Maintenance

Aside from the AC Input fuses, there are no user-serviceable parts in the TC200. If you suspect something has failed on the unit, and if you have first referred to **Troubleshooting** on page 36, please contact Thorlabs for advice on returning the unit for evaluation.

10.4. Cleaning

The unit can be cleaned using a soft, slightly damp cloth. Avoid using any solvents on or near the unit.

Chapter 11 Auxiliary Output

The TC200 provides a secondary output to enable operation of multiple Thorlabs' Gas Cell Heaters using only one control unit. The Auxiliary Output shares the total output current of the unit proportionally with the Main Output. The Main Output current is regulated via the feedback from the temperature sensor in the main heater. The Auxiliary Output is not regulated and follows the changes in current made to the Main Output. For best results, both heaters should have similar heater resistances (within a few ohms).

The Auxiliary heater temperature can be momentarily shown on the LCD display by pressing and holding the **SELECT** keypad. The temperature will be shown under the ACTUAL TEMP text on the Front Panel display. The Auxiliary temperature can also be viewed from the command line interface by typing **taux?**.

Note: the Auxiliary temperature is only updated once every five seconds and only when the sensor is of the PTC100 type.

Note: The Auxiliary input is only compatible with PT100 sensors.

11.1. Operating the Gas Cell Heater

Due to the unbalanced nature of the Auxiliary Output, it is best to connect the heater with the least resistance to the Main Output and the higher resistance heater to the Auxiliary Output. This will ensure that the Auxiliary heater does not exceed the **TMAX** level (which is only monitored on the Main Output).

Determine the main heater by connecting both heaters to the unit, setting the target temperature, and enabling the TC200. Once the main heater starts to show an increase in temperature, press the **SELECT** keypad to view the Auxiliary temperature. If the Auxiliary temperature is greater than the Main temperature, disable the heater, turn off the power, and exchange the two heaters by connecting the original main heater into the Auxiliary Output. Repeat this process once the temperatures have settled to verify proper balance.

11.2. Alternate Use of the Auxiliary Output

The Auxiliary output can also be used as an input for a second PT100 temperature sensor placed elsewhere in your thermal system, without the use of a secondary heater load.

Connect the sensor as shown on page 34. Pressing the **SELECT** keypad while in the Main Display screen will now show the secondary sensor temperature.

Chapter 12 Specifications

Item #	TC200		
	Min	Typical	Max
Input Voltage ^a	100 VAC	-	240 VAC
Input Power	-	-	25 VA
Output Power	-	-	18 Watts DC
Output Current	-	-	750 mADC
Output Voltage	-	-	24 VDC
Temperature Control Range ^{b, f}	20.0 °C	-	200.0 °C
Set-Point Resolution	0.1 °C	-	-
Actual Temp. Display Accuracy ^c	-	±0.1 °C	±0.5 °C
Temperature Stability, 24 hours ^d	-	±0.1 °C	-

^a Universal input 50 – 60 Hz; no line switching required. The TEC200 is supplied with a 115 V parallel blade line cord for North American use only, while the TC200-EC is shipped with a 230 VAC line cord for European use. For all other applications, use an IEC 320 compatible line cord fitted with a plug appropriate for your particular AC wall socket.

^b Heating mode only. Ambient temperature must always be less than set-point temperature.

^c Does not account for errors due to sensor tolerances.

^d Measured in a constant ambient temperature. Accuracy is strongly dependent on the individual heating system and P, I, and D gain parameters.

^e All technical data valid at 23 ± 5 °C and 45 ± 15% humidity.

^f The capability to attain Maximum Temperature is load dependent.

TC200	
Sensor Types	Platinum 100 Ω, Platinum 1000 Ω, TH10K
Output Connector Mating Connector	HIROSE HR10A-7R-6S HIROSE HR10A-7P-6P (73)
USB Interface	USB 2.0, Standard B Plug
Operating / Storage Temperatures	10 – 40 °C / 0 – 50 °C
Dimensions (LxWxH)	11.5" (292 mm) x 5.3" (135 mm) x 3.0" (76 mm)
Weight	5 lbs

12.1. Accessories

The following accessories are directly compatible with the TC200 Temperature Controller:

1. PPLN Ovens
 - **PV10:** PPLN Oven for 10 mm Long Crystals
 - **PV20:** PPLN Oven for 20 mm Long Crystals
 - **PV40:** PPLN Oven for 40 mm Long Crystals

2. Gas Cell Heaters
 - **GCH09-150:** Heater for 9 x 150 mm Reference Cell
 - **GCH09-50:** Heater for 9 x 50 mm Reference Cell
 - **GCH09-75:** Heater for 9 x 75 mm Reference Cell
 - **GCH19-100:** Heater for 19 x 100 mm Reference Cell
 - **GCH19-75:** Heater for 19 x 75 mm Reference Cell
 - **GCH25-75:** Heater for 25 x 75 Reference Cell

Chapter 13 Warranty

Thorlabs, Inc. warrants the material and production of the TC200 Temperature Controller for a period of 24 months from the date of shipment. During this warranty period, Thorlabs, Inc. will repair or exchange any units found to be defective in material or workmanship.

For warranty repairs or service, the unit must be returned to Thorlabs, Inc. or one of our worldwide offices. All returns must be accompanied by a Returned Material Authorization (RMA) number issued by Thorlabs. The customer is responsible for all costs incurred to ship the unit back to Thorlabs; in the case of warranty repairs, Thorlabs will cover the cost of shipment back to the customer.

In the case of shipments from outside of the United States, duties, taxes etc. shall be the responsibility of the customer.

Thorlabs, Inc. warrants all firmware and software used for the TC200 to operate fault-free, provided they are used in accordance with the requirements stated in this manual. However, Thorlabs does not warrant a fault-free operation for special applications.

Thorlabs, Inc. does not guarantee that this manual is error free and reserves the right to change this manual, the specifications, or the data of the described unit at any time, without notice.

Thorlabs, Inc. is not liable for any incidental damage caused by failure of this unit.

This warranty does not cover errors in operation, defects, or damage caused by the use of software not supplied by Thorlabs, modifications or misuse, or damage caused if the unit is used outside the operating parameters specified in this manual.

This warranty does not cover failure due to incorrectly connected heater and/or sensor elements, or failure of heater and/or sensor elements.



ATTENTION



The TC200 is not intended for use in medical and/or life support situations.

Chapter 14 Regulatory

As required by the WEEE (Waste Electrical and Electronic Equipment Directive) of the European Community and the corresponding national laws, Thorlabs offers all end users in the EC the possibility to return “end of life” units without incurring disposal charges.

- This offer is valid for Thorlabs electrical and electronic equipment:
- Sold after August 13, 2005
- Marked correspondingly with the crossed out “wheelie bin” logo (see right)
- Sold to a company or institute within the EC
- Currently owned by a company or institute within the EC
- Still complete, not disassembled and not contaminated



Wheelie Bin Logo

As the WEEE directive applies to self-contained operational electrical and electronic products, this end of life take back service does not refer to other Thorlabs products, such as:

- Pure OEM products, that means assemblies to be built into a unit by the user (e. g. OEM laser driver cards)
- Components
- Mechanics and optics
- Left over parts of units disassembled by the user (PCB's, housings etc.).

If you wish to return a Thorlabs unit for waste recovery, please contact Thorlabs or your nearest dealer for further information.

Waste Treatment is Your Own Responsibility

If you do not return an “end of life” unit to Thorlabs, you must hand it to a company specialized in waste recovery. Do not dispose of the unit in a litter bin or at a public waste disposal site.

Ecological Background

It is well known that WEEE pollutes the environment by releasing toxic products during decomposition. The aim of the European RoHS directive is to reduce the content of toxic substances in electronic products in the future.

The intent of the WEEE directive is to enforce the recycling of WEEE. A controlled recycling of end of life products will thereby avoid negative impacts on the environment.

Chapter 15 Certifications and Compliance

Category	Standards or Description
EC Declaration of Conformity – EMC	Meets intent of Directive 89/336/EEC for Electromagnetic Compatibility. Compliance is given to the following specifications as listed in the Official Journal of the European Communities:
-EN 61326	EMC requirements for Class A electrical equipment for measurement, control, and laboratory use, including Class A Radiated and Conducted Emissions ^{a, b} and Immunity ^{a, c}
-IEC 61000-4-2	Electrostatic Discharge Immunity (Performance Criterion C)
-IEC 61000-4-3	Radiated RF Electromagnetic Field Immunity (Performance Criterion B) ^b
-IEC 61000-4-4	Electrical Fast Transient / Burst Immunity (Performance Criterion B)
-IEC61000-4-5	Power Line Surge Immunity (Performance Criterion C)
-IEC61000-4-6	Conducted RF Immunity (Performance Criterion B)
-IEC 61000-4-11	Voltage Dips and Interruptions Immunity (Performance Criterion C)
-EN 61000-3-2	AC Power Line Harmonic Emissions
Australia/New Zealand Declaration of Conformity – EMC	Complies with the Radio Communications Act per EMC Emission Standard ^b :
-AS/NZS 2064	Industrial, Scientific, and Medical Equipment: 1992
-FCC EMC Compliance	Emissions comply with the Class A Limits of FCC Code of Federal Regulations 47, Part 15, Subpart B ^{a, b}
EC Declaration of Conformity – Low Voltage	Compliance is given to the following specification as listed in the Official Journal of the European Communities: Low Voltage Directive 73/23/EEC, amended by 93/68/EEC
EN 61010-1/A2: 1995	Safety requirements for electrical equipment for measurement control and laboratory use.
U.S. Nationally Recognized Testing Laboratory Listing	
-UL3111-1	Standard for electrical measuring and test equipment.
-ANSI/ISA S82.01:1994	Safety standard for electrical and electronic test, measuring, controlling, and related equipment.
Canadian Certification	
CAN/CSA C22.2 No. 1010.1	Safety requirements for electrical equipment for measurement, control, and laboratory use.
Additional Compliance	
IEC61010-1/A2:1995	Safety requirements for electrical equipment for measurement, control and laboratory use.
Equipment Type	Test and Measuring
Safety Class	Class 1 (As Defined in IEC 61010-1, Annex H) – Grounded Product

^a Using high-quality shielded interface cables

^b Emissions, which exceed the levels required by these standards, may occur when this equipment is connected to a test object.

^c Minimum Immunity Test requirement.

Chapter 16 Thorlabs Worldwide Contacts

USA, Canada, and South America

Thorlabs, Inc.
56 Sparta Avenue
Newton, NJ 07860
USA
Tel: 973-300-3000
Fax: 973-300-3600
www.thorlabs.com
www.thorlabs.us (West Coast)
Email: sales@thorlabs.com
Support: techsupport@thorlabs.com

Europe

Thorlabs GmbH
Hans-Böckler-Str. 6
85221 Dachau
Germany
Tel: +49-(0)8131-5956-0
Fax: +49-(0)8131-5956-99
www.thorlabs.de
Email: europe@thorlabs.com

France

Thorlabs SAS
109, rue des Côtes
78600 Maisons-Laffitte
France
Tel: +33 (0) 970 444 844
Fax: +33 (0) 825 744 800
www.thorlabs.com
Email: sales.fr@thorlabs.com

Japan

Thorlabs Japan, Inc.
Higashi-Ikebukuro Q Building, 2F
2-23-2, Higashi-Ikebukuro,
Toshima-ku, Tokyo 170-0013
Japan
Tel: +81-3-5979-8889
Fax: +81-3-5979-7285
www.thorlabs.jp
Email: sales@thorlabs.jp

UK and Ireland

Thorlabs Ltd.
1 Saint Thomas Place, Ely
Cambridgeshire CB7 4EX
Great Britain
Tel: +44 (0)1353-654440
Fax: +44 (0)1353-654444
www.thorlabs.com
Email: sales.uk@thorlabs.com
Support: techsupport.uk@thorlabs.com

Scandinavia

Thorlabs Sweden AB
Bergfotsgatan 7
431 35 Mölndal
Sweden
Tel: +46-31-733-30-00
Fax: +46-31-703-40-45
www.thorlabs.com
Email: scandinavia@thorlabs.com

Brazil

Thorlabs Vendas de Fotônicos Ltda.
Rua Riachuelo, 171
São Carlos, SP 13560-110
Brazil
Tel: +55-16-3413 7062
Fax: +55-16-3413 7064
www.thorlabs.com
Email: brasil@thorlabs.com

China

Thorlabs China
Room A101, No. 100
Lane 2891, South Qilianshan Road
Putuo District
Shanghai
China
Tel: +86 (0)21-60561122
Fax: +86 (0)21-32513480
www.thorlabs.hk
Email: chinasales@thorlabs.com



THORLABS
www.thorlabs.com
